

Product datasheet for **TA324411S**

MSH2 Rabbit Polyclonal Antibody

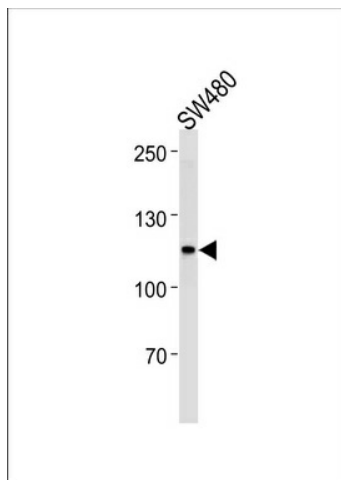
Product data:

Product Type:	Primary Antibodies
Applications:	FC, IF, WB
Recommended Dilution:	WB: 1:1000, IF: 1:10~50, FC: 1:10~50
Reactivity:	Human
Host:	Rabbit
Isotype:	IgG
Clonality:	Polyclonal
Immunogen:	This MSH2 antibody is generated from rabbits immunized with a KLH conjugated synthetic peptide between 637-665 amino acids from the Central region of human MSH2.
Formulation:	Purified polyclonal antibody supplied in PBS with 0.09% (W/V) sodium azide.
Concentration:	lot specific
Purification:	This antibody is purified through a protein A column, followed by peptide affinity purification.
Conjugation:	Unconjugated
Storage:	Store at -20°C as received.
Stability:	Stable for 12 months from date of receipt.
Predicted Protein Size:	104743 Da
Gene Name:	mutS homolog 2
Database Link:	NP_000242 Entrez Gene 4436 Human P43246
Synonyms:	COCA1; FCC1; HNPCC; HNPCC1; LCFS2
Protein Families:	Druggable Genome, Stem cell - Pluripotency
Protein Pathways:	Colorectal cancer, Mismatch repair, Pathways in cancer

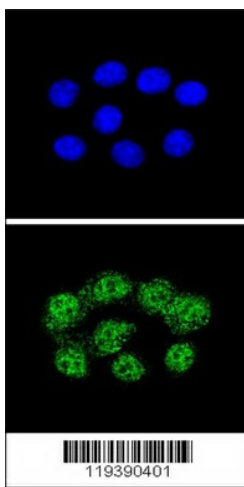


[View online »](#)

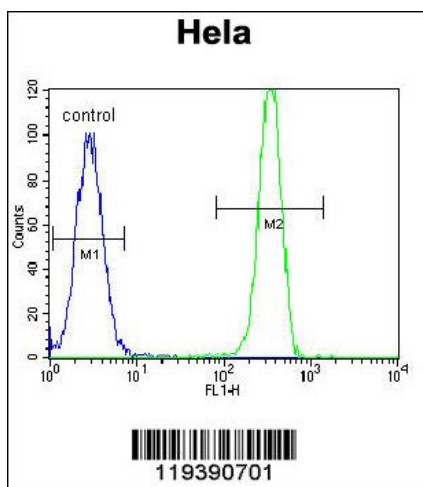
Product images:



MSH2 Antibody (Center) (Cat. #[TA324411]) western blot analysis in SW480, U251 cell line lysates (35ug/lane). This demonstrates the MSH2 antibody detected the MSH2 protein (arrow).



Confocal immunofluorescent analysis of MSH2 Antibody (Center) (Cat. #[TA324411]) with HeLa cell followed by Alexa Fluor[®] 488-conjugated goat anti-rabbit IgG (green). DAPI was used to stain the cell nuclear (blue).



MSH2 Antibody (Center) (Cat. #[TA324411]) flow cytometric analysis of HeLa cells (right histogram) compared to a negative control cell (left histogram). FITC-conjugated goat-anti-rabbit secondary antibodies were used for the analysis.