

Product datasheet for **TA324410**

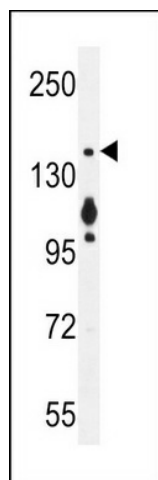
MYO6 Rabbit Polyclonal Antibody

Product data:

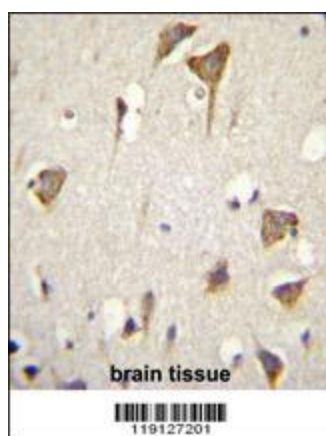
| | |
|-------------------------|--|
| Product Type: | Primary Antibodies |
| Applications: | IF, IHC, WB |
| Recommended Dilution: | WB: 1:1000, IHC: 1:50~100, IF: 1:10~50 |
| Reactivity: | Human (Predicted: Mouse) |
| Host: | Rabbit |
| Isotype: | IgG |
| Clonality: | Polyclonal |
| Immunogen: | This MYO6 antibody is generated from rabbits immunized with a KLH conjugated synthetic peptide between 1166-1195 amino acids from the C-terminal region of human MYO6. |
| Formulation: | Purified polyclonal antibody supplied in PBS with 0.09% (W/V) sodium azide. |
| Concentration: | lot specific |
| Purification: | This antibody is purified through a protein A column, followed by peptide affinity purification. |
| Conjugation: | Unconjugated |
| Storage: | Store at -20°C as received. |
| Stability: | Stable for 12 months from date of receipt. |
| Predicted Protein Size: | 149691 Da |
| Gene Name: | myosin VI |
| Database Link: | NP_004990 Entrez Gene 17920 Mouse Entrez Gene 4646 Human Q9UM54 |
| Synonyms: | DFNA22; DFNB37 |



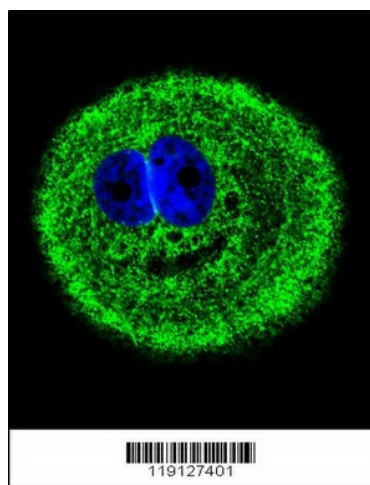
[View online »](#)

Product images:

MYO6 Antibody (C-term [R1181]) (Cat. #TA324410) western blot analysis in MCF-7 cell line lysates (35ug/lane). This demonstrates the MYO6 antibody detected the MYO6 protein (arrow).



MYO6 Antibody (C-term [R1181]) (Cat. #TA324410) immunohistochemistry analysis in formalin fixed and paraffin embedded human brain tissue followed by peroxidase conjugation of the secondary antibody and DAB staining. This data demonstrates the use of MYO6 Antibody (C-term [R1181]) for immunohistochemistry. Clinical relevance has not been evaluated.



Confocal immunofluorescent analysis of MYO6 Antibody (C-term [R1181]) (Cat. #TA324410) with MCF-7 cell followed by Alexa Fluor® 488-conjugated goat anti-rabbit IgG (green). DAPI was used to stain the cell nuclear (blue).