

## Product datasheet for **TA324408**

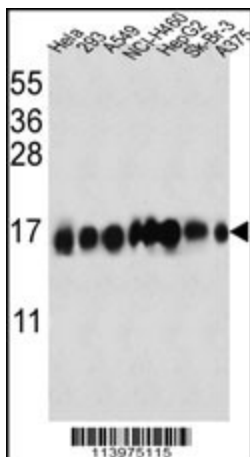
### IFITM3 Rabbit Polyclonal Antibody

#### Product data:

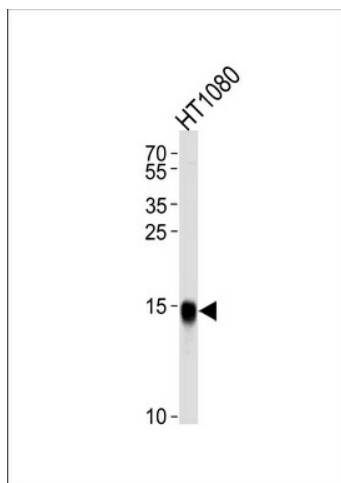
Product Type:	Primary Antibodies
Applications:	IF, WB
Recommended Dilution:	WB: 1:1000, IF: 1:100~500
Reactivity:	Human
Host:	Rabbit
Isotype:	IgG
Clonality:	Polyclonal
Immunogen:	This Interferon-inducible protein (IFITM3) antibody is generated from rabbits immunized with a KLH conjugated synthetic peptide between 1-30 amino acids from the N-terminal region of human Interferon-inducible protein (IFITM3).
Formulation:	Purified polyclonal antibody supplied in PBS with 0.09% (W/V) sodium azide.
Concentration:	lot specific
Purification:	This antibody is prepared by Saturated Ammonium Sulfate (SAS) precipitation followed by dialysis against PBS.
Conjugation:	Unconjugated
Storage:	Store at -20°C as received.
Stability:	Stable for 12 months from date of receipt.
Predicted Protein Size:	14632 Da
Gene Name:	interferon induced transmembrane protein 3
Database Link:	<a href="#">NP_066362</a> <a href="#">Entrez Gene 10410 Human</a> <a href="#">Q01628</a>
Synonyms:	1-8U; DSPA2b; IP15
Protein Families:	Transmembrane



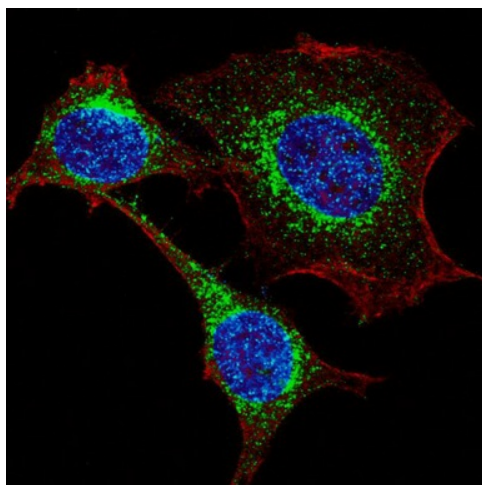
[View online »](#)

**Product images:**


IFITM3 Antibody (N-term) (Cat. #TA324408) western blot analysis in Hela, 293, A549, NCI-H460, HepG2, Sk-Br-3, A375 cell line lysates (35ug/lane). This demonstrates the IFITM3 antibody detected the IFITM3 protein (arrow).



Western blot analysis of lysate from HT1080 cell line, using IFITM3 Antibody (N-term) (Cat. #TA324408). TA324408 was diluted at 1:1000 at each lane. A goat anti-rabbit IgG H&L (HRP) at 1:5000 dilution was used as the secondary antibody. Lysate at 35ug per lane.



IF image of HeLa cells stained with IFITM3 (N-term) antibody. HeLa cells were incubated with Fragilis (IFITM3) (N-term) primary antibody (1:200, 2 h at RT). For secondary antibody, Alexa Fluor® 488 conjugated donkey anti-rabbit antibody (green) was used (1:1000, 1h). Cytoplasmic actin was counterstained with Alexa Fluor® 555 (red) conjugated Phalloidin. Nuclei were counterstained with Hoechst 33342 (blue). Note the highly specific localization of the IFITM3 immunoreactivity to the Golgi.