

## Product datasheet for **TA324407S**

### ATP6V1B1 Rabbit Polyclonal Antibody

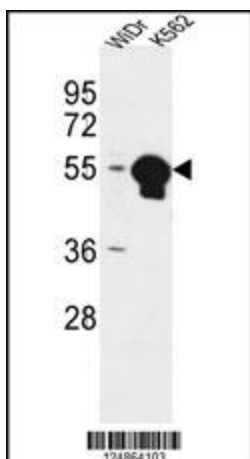
#### Product data:

Product Type:	Primary Antibodies
Applications:	IF, IHC, WB
Recommended Dilution:	WB: 1:1000, IHC: 1:10~50, IF: 1:10~50
Reactivity:	Human (Predicted: Mouse, Rat, Bovine, Chicken, Drosophila, C. elegans)
Host:	Rabbit
Isotype:	IgG
Clonality:	Polyclonal
Immunogen:	This ATP6V1B1 antibody is generated from rabbits immunized with a KLH conjugated synthetic peptide between 284-310 amino acids from the Central region of human ATP6V1B1.
Formulation:	Purified polyclonal antibody supplied in PBS with 0.09% (W/V) sodium azide.
Concentration:	lot specific
Purification:	This antibody is purified through a protein A column, followed by peptide affinity purification.
Conjugation:	Unconjugated
Storage:	Store at -20°C as received.
Stability:	Stable for 12 months from date of receipt.
Predicted Protein Size:	56833 Da
Gene Name:	ATPase H <sup>+</sup> transporting V1 subunit B1
Database Link:	<a href="#">NP_001683</a> <a href="#">Entrez Gene 110935 Mouse</a> <a href="#">Entrez Gene 312488 Rat</a> <a href="#">Entrez Gene 525 Human</a> <a href="#">P15313</a>
Synonyms:	ATP6B1; RTA1B; VATB; VMA2; VPP3
Protein Families:	Druggable Genome
Protein Pathways:	Epithelial cell signaling in Helicobacter pylori infection, Metabolic pathways, Oxidative phosphorylation, Vibrio cholerae infection

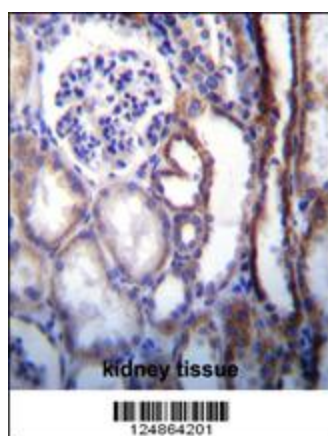


[View online »](#)

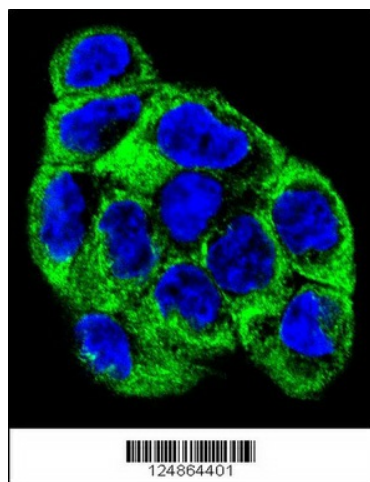
## Product images:



ATP6V1B1 Antibody (Center) (Cat. # [TA324407]) western blot analysis in WiDr, K562 cell line lysates (35ug/lane). This demonstrates the ATP6V1B1 antibody detected the ATP6V1B1 protein (arrow).



ATP6V1B1 Antibody (Center) (Cat. # [TA324407]) immunohistochemistry analysis in formalin fixed and paraffin embedded human kidney tissue followed by peroxidase conjugation of the secondary antibody and DAB staining. This data demonstrates the use of ATP6V1B1 Antibody (Center) for immunohistochemistry. Clinical relevance has not been evaluated.



Confocal immunofluorescent analysis of ATP6V1B1 Antibody (Center) (Cat#[TA324407]) with WiDr cell followed by Alexa Fluor 488-conjugated goat anti-rabbit IgG (green). DAPI was used to stain the cell nuclear (blue).

