

Product datasheet for **TA324406**

Protein cornichon homolog 2 (CNIH2) Rabbit Polyclonal Antibody

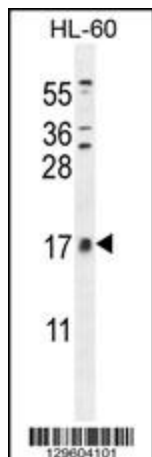
Product data:

| | |
|-------------------------|--|
| Product Type: | Primary Antibodies |
| Applications: | FC, IF, IHC, WB |
| Recommended Dilution: | WB: 1:1000, IHC: 1:10~50, FC: 1:10~50, IF: 1:10~50 |
| Reactivity: | Human (Predicted: Mouse, Rat, Chicken) |
| Host: | Rabbit |
| Isotype: | IgG |
| Clonality: | Polyclonal |
| Immunogen: | This CNIH2 antibody is generated from rabbits immunized with a KLH conjugated synthetic peptide between 31-59 amino acids from the N-terminal region of human CNIH2. |
| Formulation: | Purified polyclonal antibody supplied in PBS with 0.09% (W/V) sodium azide. |
| Concentration: | lot specific |
| Purification: | This antibody is purified through a protein A column, followed by peptide affinity purification. |
| Conjugation: | Unconjugated |
| Storage: | Store at -20°C as received. |
| Stability: | Stable for 12 months from date of receipt. |
| Predicted Protein Size: | 18931 Da |
| Gene Name: | cornichon family AMPA receptor auxiliary protein 2 |
| Database Link: | NP_872359 Entrez Gene 12794 Mouse Entrez Gene 361705 Rat Entrez Gene 254263 Human Q6PI25 |
| Synonyms: | CNIH-2; Cnil |
| Protein Families: | Transmembrane |

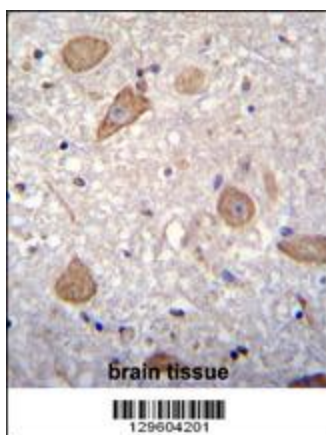


[View online »](#)

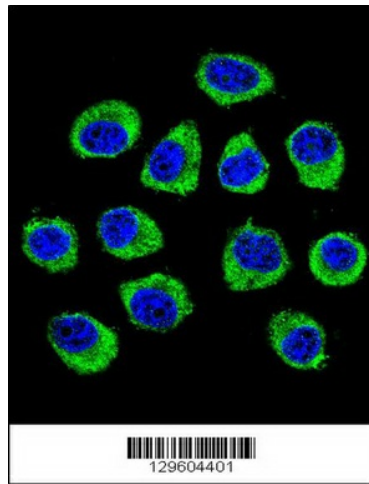
Product images:



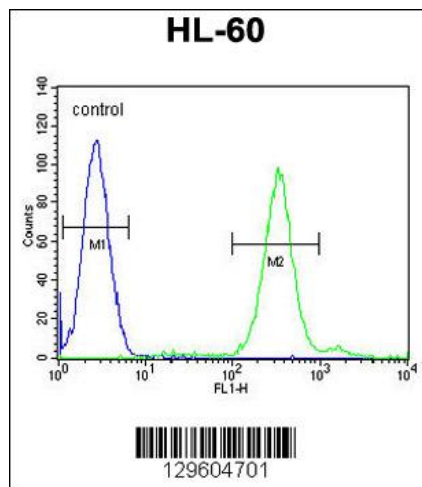
CNIH2 Antibody (N-term) (Cat. #TA324406) western blot analysis in HL-60 cell line lysates (35ug/lane). This demonstrates the CNIH2 antibody detected the CNIH2 protein (arrow).



CNIH2 Antibody (N-term) (Cat. #TA324406) immunohistochemistry analysis in formalin fixed and paraffin embedded human brain tissue followed by peroxidase conjugation of the secondary antibody and DAB staining. This data demonstrates the use of CNIH2 Antibody (N-term) for immunohistochemistry. Clinical relevance has not been evaluated.



Confocal immunofluorescent analysis of CNIH2 Antibody (N-term) (Cat#TA324406) with U-251MG cell followed by Alexa Fluor 488-conjugated goat anti-rabbit IgG (green). DAPI was used to stain the cell nuclear (blue).



CNIH2 Antibody (N-term) (Cat. #TA324406) flow cytometric analysis of HL-60 cells (right histogram) compared to a negative control cell (left histogram). FITC-conjugated goat-anti-rabbit secondary antibodies were used for the analysis.