

## Product datasheet for **TA324404**

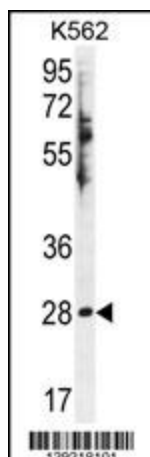
### HSD11B1L Rabbit Polyclonal Antibody

#### Product data:

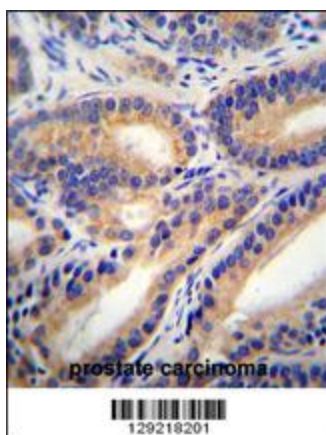
Product Type:	Primary Antibodies
Applications:	IF, IHC, WB
Recommended Dilution:	WB: 1:1000, IHC: 1:10~50, IF: 1:10~50
Reactivity:	Human
Host:	Rabbit
Isotype:	IgG
Clonality:	Polyclonal
Immunogen:	This HSD11B1L antibody is generated from rabbits immunized with a KLH conjugated synthetic peptide between 256-283 amino acids from the C-terminal region of human HSD11B1L.
Formulation:	Purified polyclonal antibody supplied in PBS with 0.09% (W/V) sodium azide.
Concentration:	lot specific
Purification:	This antibody is purified through a protein A column, followed by peptide affinity purification.
Conjugation:	Unconjugated
Storage:	Store at -20°C as received.
Stability:	Stable for 12 months from date of receipt.
Predicted Protein Size:	34288 Da
Gene Name:	hydroxysteroid (11-beta) dehydrogenase 1-like
Database Link:	<a href="#">NP_941997</a> <a href="#">Entrez Gene 374875 Human</a> <a href="#">Q7Z5J1</a>
Synonyms:	11-beta-HSD3; 11-DH3; HSD3; SCDR10; SCDR10B; SDR26C2
Protein Families:	Druggable Genome



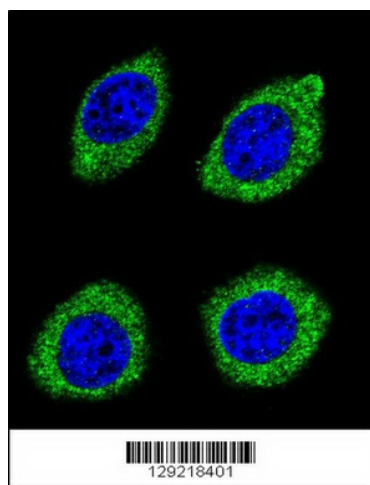
[View online »](#)

**Product images:**

HSD11B1L Antibody (C-term) (Cat. #TA324404) western blot analysis in K562 cell line lysates (35ug/lane). This demonstrates the HSD11B1L antibody detected the HSD11B1L protein (arrow).



HSD11B1L Antibody (C-term) (Cat. #TA324404) immunohistochemistry analysis in formalin fixed and paraffin embedded human prostate carcinoma followed by peroxidase conjugation of the secondary antibody and DAB staining. This data demonstrates the use of HSD11B1L Antibody (C-term) for immunohistochemistry. Clinical relevance has not been evaluated.



Confocal immunofluorescent analysis of HSD11B1L Antibody (C-term) (Cat#TA324404) with U-251MG cell followed by Alexa Fluor 488-conjugated goat anti-rabbit IgG (green). DAPI was used to stain the cell nuclear (blue).