

Product datasheet for **TA324403**

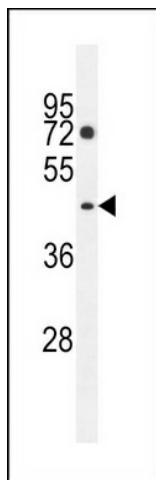
PM20D2 Rabbit Polyclonal Antibody

Product data:

Product Type:	Primary Antibodies
Applications:	IF, IHC, WB
Recommended Dilution:	WB: 1:1000, IHC: 1:50~100, IF: 1:10~50
Reactivity:	Human
Host:	Rabbit
Isotype:	IgG
Clonality:	Polyclonal
Immunogen:	This PM20D2 antibody is generated from rabbits immunized with a KLH conjugated synthetic peptide between 396-425 amino acids from the C-terminal region of human PM20D2.
Formulation:	Purified polyclonal antibody supplied in PBS with 0.09% (W/V) sodium azide.
Concentration:	lot specific
Purification:	This antibody is purified through a protein A column, followed by peptide affinity purification.
Conjugation:	Unconjugated
Storage:	Store at -20°C as received.
Stability:	Stable for 12 months from date of receipt.
Predicted Protein Size:	47776 Da
Gene Name:	peptidase M20 domain containing 2
Database Link:	NP_001010853 Entrez Gene 135293 Human Q8IYS1
Synonyms:	ACY1L2; bA63L7.3
Protein Families:	Protease



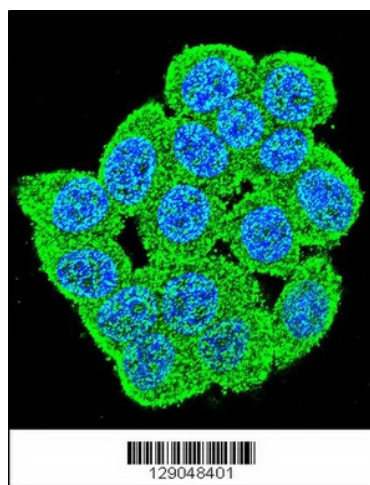
[View online »](#)

Product images:

PM20D2 Antibody (C-term) (Cat. #TA324403) western blot analysis in K562 cell line lysates (35ug/lane). This demonstrates the PM20D2 antibody detected the PM20D2 protein (arrow).



PM20D2 Antibody (C-term) (Cat. #TA324403) immunohistochemistry analysis in formalin fixed and paraffin embedded human placenta tissue followed by peroxidase conjugation of the secondary antibody and DAB staining. This data demonstrates the use of PM20D2 Antibody (C-term) for immunohistochemistry. Clinical relevance has not been evaluated.



Confocal immunofluorescent analysis of PM20D2 Antibody (C-term) (Cat#TA324403) with HeLa cell followed by Alexa Fluor 488-conjugated goat anti-rabbit IgG (green). DAPI was used to stain the cell nuclear (blue).