

Product datasheet for **TA324402S**

STRA8 Rabbit Polyclonal Antibody

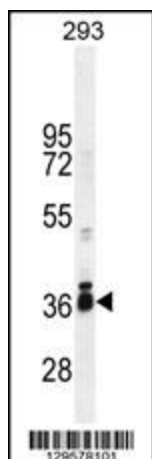
Product data:

Product Type:	Primary Antibodies
Applications:	IF, IHC, WB
Recommended Dilution:	WB: 1:1000, IHC: 1:10~50, IF: 1:10~50
Reactivity:	Human
Host:	Rabbit
Isotype:	IgG
Clonality:	Polyclonal
Immunogen:	This STRA8 antibody is generated from rabbits immunized with a KLH conjugated synthetic peptide between 286-315 amino acids from the C-terminal region of human STRA8.
Formulation:	Purified polyclonal antibody supplied in PBS with 0.09% (W/V) sodium azide.
Concentration:	lot specific
Purification:	This antibody is purified through a protein A column, followed by peptide affinity purification.
Conjugation:	Unconjugated
Storage:	Store at -20°C as received.
Stability:	Stable for 12 months from date of receipt.
Predicted Protein Size:	36908 Da
Gene Name:	stimulated by retinoic acid 8
Database Link:	NP_872295 Entrez Gene 346673 Human Q7Z7C7
Synonyms:	stimulated by retinoic acid gene 8 homolog (mouse)

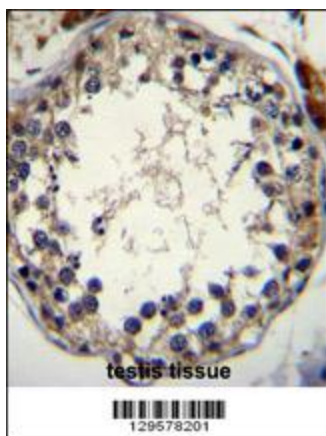


[View online »](#)

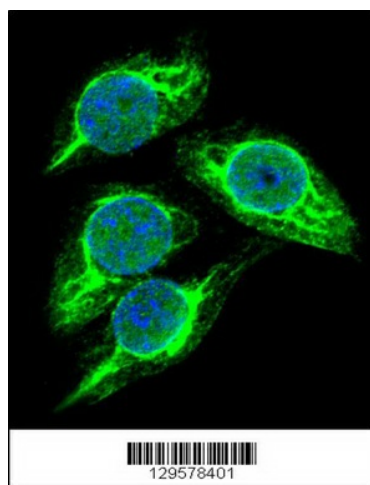
Product images:



STRA8 Antibody (C-term) (Cat. # [TA324402]) western blot analysis in 293 cell line lysates (35ug/lane). This demonstrates the STRA8 antibody detected the STRA8 protein (arrow).



STRA8 Antibody (C-term) (Cat. # [TA324402]) immunohistochemistry analysis in formalin fixed and paraffin embedded human testis tissue followed by peroxidase conjugation of the secondary antibody and DAB staining. This data demonstrates the use of STRA8 Antibody (C-term) for immunohistochemistry. Clinical relevance has not been evaluated.



Confocal immunofluorescent analysis of STRA8 Antibody (C-term) (Cat#[TA324402]) with 293 cell followed by Alexa Fluor 488-conjugated goat anti-rabbit IgG (green). DAPI was used to stain the cell nuclear (blue).