

Product datasheet for **TA324400S**

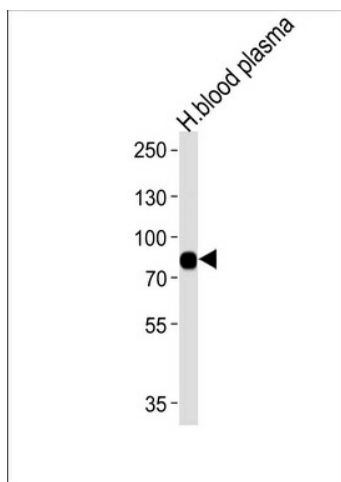
LRRC45 Rabbit Polyclonal Antibody

Product data:

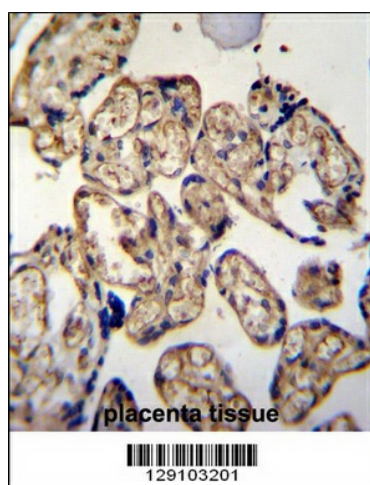
Product Type:	Primary Antibodies
Applications:	FC, IF, IHC, WB
Recommended Dilution:	WB: 1:1000, IF: 1:25, IHC: 1:50~100, FC: 1:10~50
Reactivity:	Human
Host:	Rabbit
Isotype:	IgG
Clonality:	Polyclonal
Immunogen:	This LRRC45 antibody is generated from rabbits immunized with a KLH conjugated synthetic peptide between 615-643 amino acids from the C-terminal region of human LRRC45.
Formulation:	Purified polyclonal antibody supplied in PBS with 0.09% (W/V) sodium azide.
Concentration:	lot specific
Purification:	This antibody is purified through a protein A column, followed by peptide affinity purification.
Conjugation:	Unconjugated
Storage:	Store at -20°C as received.
Stability:	Stable for 12 months from date of receipt.
Predicted Protein Size:	75951 Da
Gene Name:	leucine rich repeat containing 45
Database Link:	NP_659436 Entrez Gene 201255 Human Q96CN5
Synonyms:	MGC20806



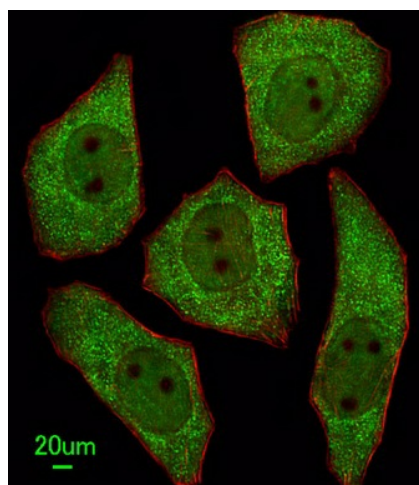
[View online »](#)

Product images:


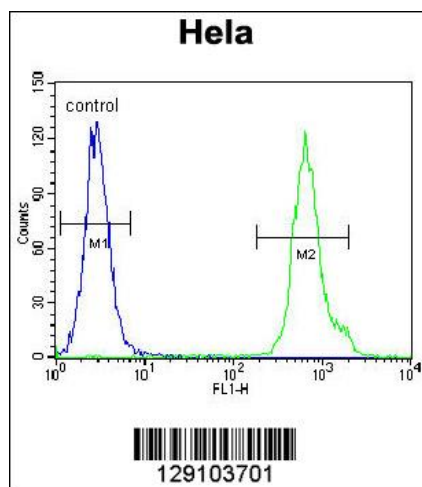
Western blot analysis of lysates from human blood plasma tissue (from left to right), using LRRC45 Antibody (C-term) (Cat. # [TA324400]). [TA324400] was diluted at 1:1000 at each lane. A goat anti-rabbit IgG H&L (HRP) at 1:5000 dilution was used as the secondary antibody. Lysates at 35ug per lane.



LRRC45 Antibody (C-term) (Cat. # [TA324400]) immunohistochemistry analysis in formalin fixed and paraffin embedded human placenta tissue followed by peroxidase conjugation of the secondary antibody and DAB staining. This data demonstrates the use of LRRC45 Antibody (C-term) for immunohistochemistry. Clinical relevance has not been evaluated.



Immunofluorescent analysis of U251 cells, using LRRC45 Antibody (C-term) (Cat. #[TA324400]). [TA324400] was diluted at 1:25 dilution. Alexa Fluor 488-conjugated goat anti-rabbit IgG at 1:400 dilution was used as the secondary antibody (green). Cytoplasmic actin was counterstained with Dylight Fluor® 554 (red) conjugated Phalloidin (red).



LRRC45 Antibody (C-term) (Cat. #[TA324400]) flow cytometric analysis of HeLa cells (right histogram) compared to a negative control cell (left histogram). FITC-conjugated goat-anti-rabbit secondary antibodies were used for the analysis.