

Product datasheet for **TA324400**

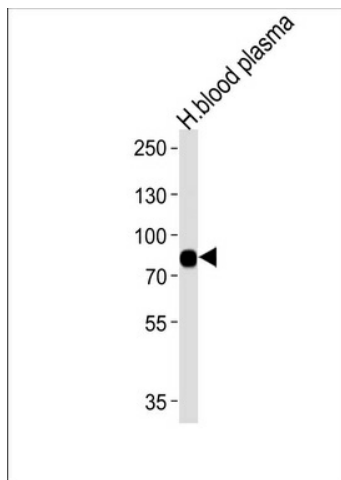
LRRC45 Rabbit Polyclonal Antibody

Product data:

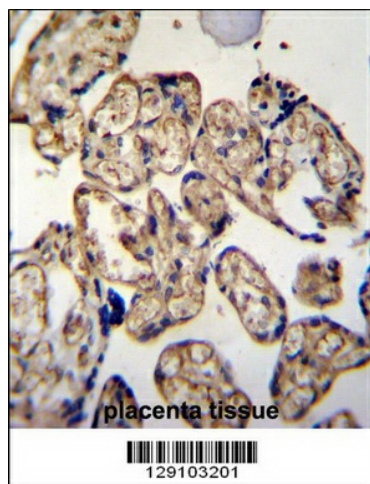
Product Type:	Primary Antibodies
Applications:	FC, IF, IHC, WB
Recommended Dilution:	WB: 1:1000, IF: 1:25, IHC: 1:50~100, FC: 1:10~50
Reactivity:	Human
Host:	Rabbit
Isotype:	IgG
Clonality:	Polyclonal
Immunogen:	This LRRC45 antibody is generated from rabbits immunized with a KLH conjugated synthetic peptide between 615-643 amino acids from the C-terminal region of human LRRC45.
Formulation:	Purified polyclonal antibody supplied in PBS with 0.09% (W/V) sodium azide.
Concentration:	lot specific
Purification:	This antibody is purified through a protein A column, followed by peptide affinity purification.
Conjugation:	Unconjugated
Storage:	Store at -20°C as received.
Stability:	Stable for 12 months from date of receipt.
Predicted Protein Size:	75951 Da
Gene Name:	leucine rich repeat containing 45
Database Link:	NP_659436 Entrez Gene 201255 Human Q96CN5
Synonyms:	MGC20806



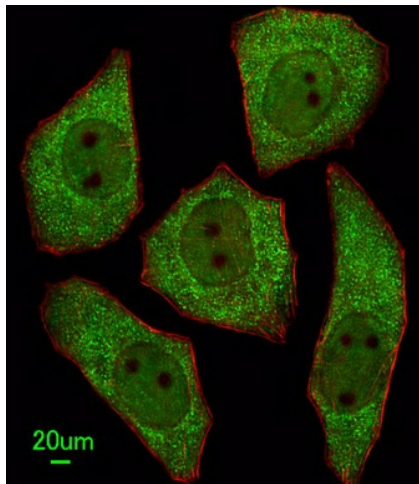
[View online »](#)

Product images:

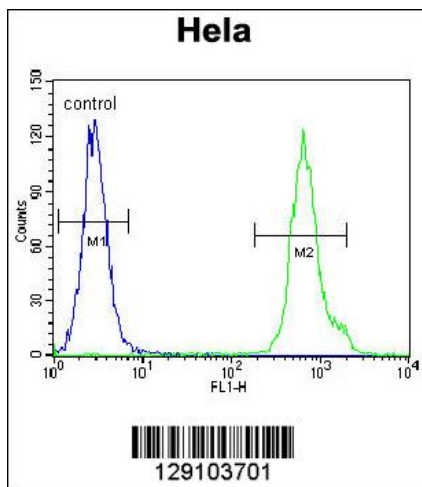
Western blot analysis of lysates from human blood plasma tissue (from left to right), using LRRC45 Antibody (C-term) (Cat. #TA324400).TA324400 was diluted at 1:1000 at each lane. A goat anti-rabbit IgG H&L (HRP) at 1:5000 dilution was used as the secondary antibody.Lysates at 35ug per lane.



LRRC45 Antibody (C-term) (Cat. #TA324400)immunohistochemistry analysis in formalin fixed and paraffin embedded human placenta tissue followed by peroxidase conjugation of the secondary antibody and DAB staining.This data demonstrates the use of LRRC45 Antibody (C-term) for immunohistochemistry. Clinical relevance has not been evaluated.



Immunofluorescent analysis of U251 cells, using LRRC45 Antibody (C-term) (Cat. #TA324400). TA324400 was diluted at 1:25 dilution. Alexa Fluor 488-conjugated goat anti-rabbit IgG at 1:400 dilution was used as the secondary antibody (green). Cytoplasmic actin was counterstained with Dylight Fluor® 554 (red) conjugated Phalloidin (red).



LRRC45 Antibody (C-term) (Cat. #TA324400) flow cytometric analysis of HeLa cells (right histogram) compared to a negative control cell (left histogram). FITC-conjugated goat-anti-rabbit secondary antibodies were used for the analysis.