

## Product datasheet for **TA324399S**

### PHOX2B Rabbit Polyclonal Antibody

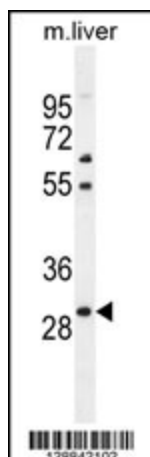
#### Product data:

|                         |   |
|-------------------------|---|
| Product Type:           | Primary Antibodies  |
| Applications:           | IF, WB  |
| Recommended Dilution:   | IF: 1:10~50, WB: 1:1000   |
| Reactivity:             | Mouse (Predicted: Human, Rat)   |
| Host:                   | Rabbit  |
| Isotype:                | IgG   |
| Clonality:              | Polyclonal  |
| Immunogen:              | This PHOX2B antibody is generated from rabbits immunized with a KLH conjugated synthetic peptide between 104-130 amino acids from the Central region of human PHOX2B. |
| Formulation:            | Purified polyclonal antibody supplied in PBS with 0.09% (W/V) sodium azide.   |
| Concentration:          | lot specific  |
| Purification:           | This antibody is purified through a protein A column, followed by peptide affinity purification.  |
| Conjugation:            | Unconjugated  |
| Storage:                | Store at -20°C as received.   |
| Stability:              | Stable for 12 months from date of receipt.  |
| Predicted Protein Size: | 31621 Da  |
| Gene Name:              | paired like homeobox 2b   |
| Database Link:          | <a href="#">NP_003915</a><br><a href="#">Entrez Gene 18935 MouseEntrez Gene 364152 RatEntrez Gene 8929 Human Q99453</a>   |
| Synonyms:               | NBLST2; NBPhox; PMX2B   |

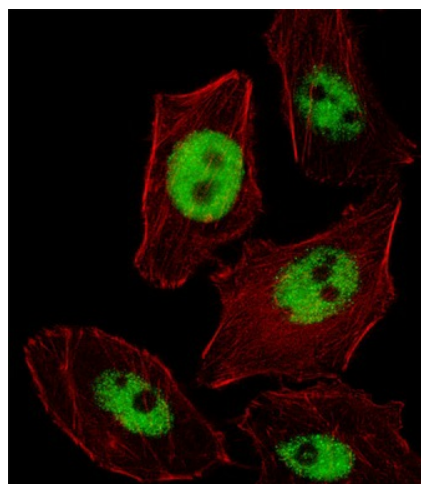


[View online »](#)

## Product images:



PHOX2B Antibody (Center) (Cat. #[TA324399]) western blot analysis in mouse liver tissue lysates (35ug/lane). This demonstrates the PHOX2B antibody detected the PHOX2B protein (arrow).



IF image of U251 cell stained with PHOX2B Antibody (Center) (Cat#[TA324399]). U251 cells were incubated with PHOX2B primary antibody (1:25, 1 h at 37°C). For secondary antibody, Alexa Fluor® 488 conjugated donkey anti-rabbit antibody (green) was used (1:400). Cytoplasmic actin was counterstained with Alexa Fluor® 555 (red) conjugated Phalloidin (7 units/ml). PHOX2B immunoreactivity is localized to Nucleus significantly.