

Product datasheet for **TA324399**

PHOX2B Rabbit Polyclonal Antibody

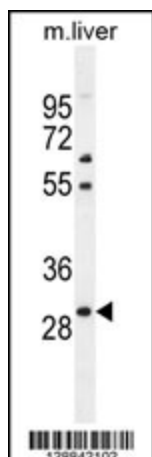
Product data:

Product Type:	Primary Antibodies
Applications:	IF, WB
Recommended Dilution:	IF: 1:10~50, WB: 1:1000
Reactivity:	Mouse (Predicted: Human, Rat)
Host:	Rabbit
Isotype:	IgG
Clonality:	Polyclonal
Immunogen:	This PHOX2B antibody is generated from rabbits immunized with a KLH conjugated synthetic peptide between 104-130 amino acids from the Central region of human PHOX2B.
Formulation:	Purified polyclonal antibody supplied in PBS with 0.09% (W/V) sodium azide.
Concentration:	lot specific
Purification:	This antibody is purified through a protein A column, followed by peptide affinity purification.
Conjugation:	Unconjugated
Storage:	Store at -20°C as received.
Stability:	Stable for 12 months from date of receipt.
Predicted Protein Size:	31621 Da
Gene Name:	paired like homeobox 2b
Database Link:	NP_003915 Entrez Gene 18935 MouseEntrez Gene 364152 RatEntrez Gene 8929 Human Q99453
Synonyms:	NBLST2; NBPhox; PMX2B

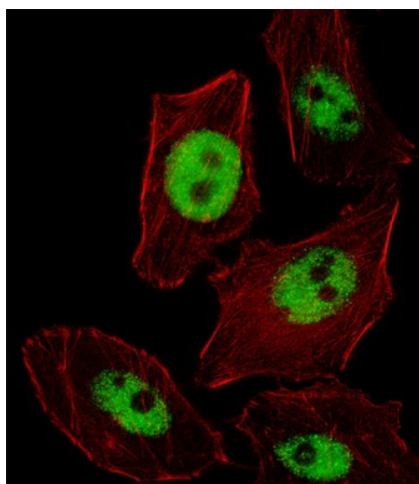


[View online »](#)

Product images:



PHOX2B Antibody (Center) (Cat. #TA324399) western blot analysis in mouse liver tissue lysates (35ug/lane). This demonstrates the PHOX2B antibody detected the PHOX2B protein (arrow).



IF image of U251 cell stained with PHOX2B Antibody (Center) (Cat#TA324399). U251 cells were incubated with PHOX2B primary antibody (1:25, 1 h at 37°C). For secondary antibody, Alexa Fluor® 488 conjugated donkey anti-rabbit antibody (green) was used (1:400). Cytoplasmic actin was counterstained with Alexa Fluor® 555 (red) conjugated Phalloidin (7 units/ml). PHOX2B immunoreactivity is localized to Nucleus significantly.