

Product datasheet for **TA324398S**

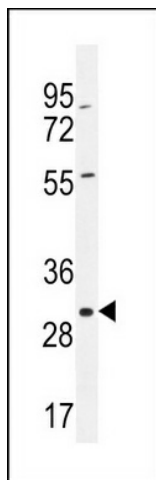
COPE Rabbit Polyclonal Antibody

Product data:

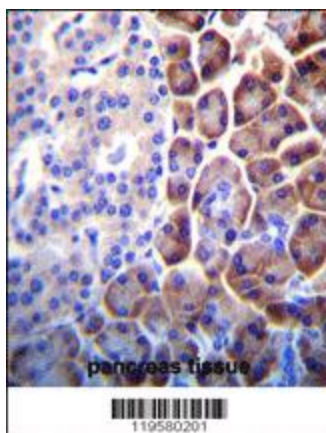
Product Type:	Primary Antibodies
Applications:	IF, IHC, WB
Recommended Dilution:	WB: 1:1000, IHC: 1:10~50, IF: 1:10~50
Reactivity:	Human (Predicted: Mouse, Chicken, Hamster)
Host:	Rabbit
Isotype:	IgG
Clonality:	Polyclonal
Immunogen:	This COPE antibody is generated from rabbits immunized with a KLH conjugated synthetic peptide between 273-300 amino acids from the C-terminal region of human COPE.
Formulation:	Purified polyclonal antibody supplied in PBS with 0.09% (W/V) sodium azide.
Concentration:	lot specific
Purification:	This antibody is purified through a protein A column, followed by peptide affinity purification.
Conjugation:	Unconjugated
Storage:	Store at -20°C as received.
Stability:	Stable for 12 months from date of receipt.
Predicted Protein Size:	34482 Da
Gene Name:	coatomer protein complex subunit epsilon
Database Link:	NP_009194 Entrez Gene 59042 Mouse Entrez Gene 11316 Human Q14579
Synonyms:	epsilon-COP



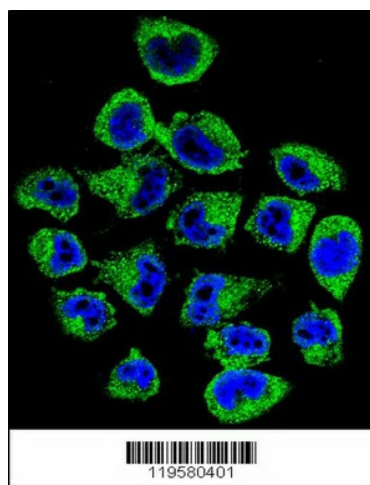
[View online »](#)

Product images:

COPE Antibody (C-term) (Cat. #[TA324398]) western blot analysis in A375 cell line lysates (35ug/lane). This demonstrates the COPE antibody detected the COPE protein (arrow).



COPE Antibody (C-term) (Cat. # [TA324398]) immunohistochemistry analysis in formalin fixed and paraffin embedded human pancreas tissue followed by peroxidase conjugation of the secondary antibody and DAB staining. This data demonstrates the use of COPE Antibody (C-term) for immunohistochemistry. Clinical relevance has not been evaluated.



Confocal immunofluorescent analysis of COPE Antibody (C-term) (Cat#[TA324398]) with A375 cell followed by Alexa Fluor 488-conjugated goat anti-rabbit IgG (green). DAPI was used to stain the cell nuclear (blue).