

Product datasheet for **TA324397S**

Cytochrome P450 1A2 (CYP1A2) Rabbit Polyclonal Antibody

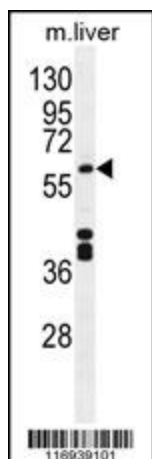
Product data:

Product Type:	Primary Antibodies
Applications:	IF, IHC, WB
Recommended Dilution:	WB: 1:1000, IHC: 1:10~50, IF: 1:10~50
Reactivity:	Human, Mouse
Host:	Rabbit
Isotype:	IgG
Clonality:	Polyclonal
Immunogen:	This CYP1A2 antibody is generated from rabbits immunized with a KLH conjugated synthetic peptide between 255-282 amino acids from the Central region of human CYP1A2.
Formulation:	Purified polyclonal antibody supplied in PBS with 0.09% (W/V) sodium azide.
Concentration:	lot specific
Purification:	This antibody is purified through a protein A column, followed by peptide affinity purification.
Conjugation:	Unconjugated
Storage:	Store at -20°C as received.
Stability:	Stable for 12 months from date of receipt.
Predicted Protein Size:	58294 Da
Gene Name:	cytochrome P450 family 1 subfamily A member 2
Database Link:	NP_000752 Entrez Gene 13077 Mouse Entrez Gene 1544 Human P05177
Synonyms:	CP12; P3-450; P450(PA)
Protein Families:	Druggable Genome, P450, Transmembrane
Protein Pathways:	Caffeine metabolism, Drug metabolism - cytochrome P450, Linoleic acid metabolism, Metabolic pathways, Metabolism of xenobiotics by cytochrome P450, Retinol metabolism, Tryptophan metabolism

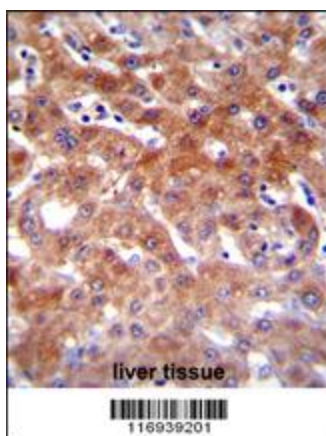


[View online »](#)

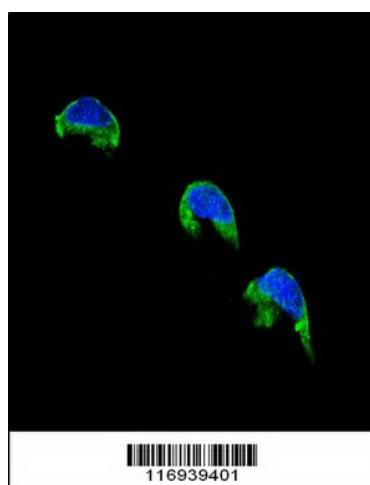
Product images:



CYP1A2 Antibody (Center) (Cat. # [TA324397]) western blot analysis in mouse liver tissue lysates (35ug/lane). This demonstrates the CYP1A2 antibody detected the CYP1A2 protein (arrow).



CYP1A2 Antibody (Center) (Cat. # [TA324397]) immunohistochemistry analysis in formalin fixed and paraffin embedded human liver tissue followed by peroxidase conjugation of the secondary antibody and DAB staining. This data demonstrates the use of CYP1A2 Antibody (Center) for immunohistochemistry. Clinical relevance has not been evaluated.



Confocal immunofluorescent analysis of CYP1A2 Antibody (Center) (Cat. # [TA324397]) with 293 cell followed by Alexa Fluor® 488-conjugated goat anti-rabbit IgG (green). DAPI was used to stain the cell nuclear (blue).