

Product datasheet for **TA324395**

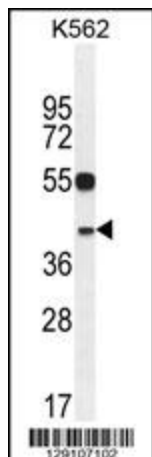
YOD1 Rabbit Polyclonal Antibody

Product data:

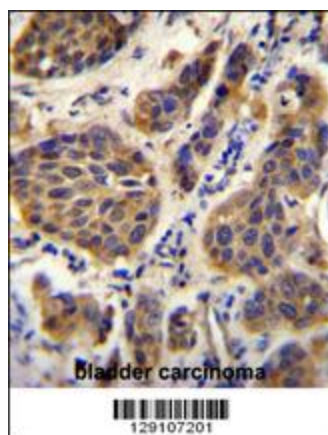
Product Type:	Primary Antibodies
Applications:	IF, IHC, WB
Recommended Dilution:	WB: 1:1000, IHC: 1:50~100, IF: 1:10~50
Reactivity:	Human (Predicted: Zebrafish, Chicken)
Host:	Rabbit
Isotype:	IgG
Clonality:	Polyclonal
Immunogen:	This YOD1 antibody is generated from rabbits immunized with a KLH conjugated synthetic peptide between 319-347 amino acids from the C-terminal region of human YOD1.
Formulation:	Purified polyclonal antibody supplied in PBS with 0.09% (W/V) sodium azide.
Concentration:	lot specific
Purification:	This antibody is purified through a protein A column, followed by peptide affinity purification.
Conjugation:	Unconjugated
Storage:	Store at -20°C as received.
Stability:	Stable for 12 months from date of receipt.
Predicted Protein Size:	38322 Da
Gene Name:	YOD1 deubiquitinase
Database Link:	NP_061036 Entrez Gene 55432 Human Q5VVQ6
Synonyms:	DUBA8; OTUD2; PRO0907
Protein Pathways:	Biosynthesis of unsaturated fatty acids, Limonene and pinene degradation



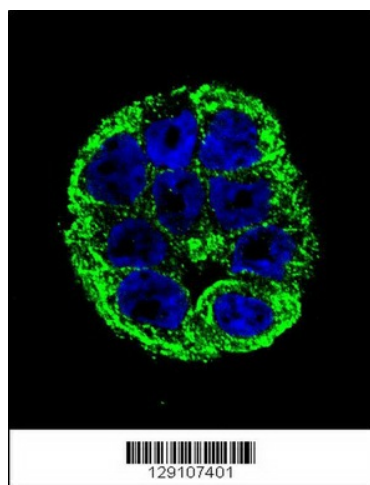
[View online »](#)

Product images:

YOD1 Antibody (C-term) (Cat. #TA324395) western blot analysis in K562 cell line lysates (35ug/lane). This demonstrates the YOD1 antibody detected the YOD1 protein (arrow).



YOD1 Antibody (C-term) (Cat. #TA324395) immunohistochemistry analysis in formalin fixed and paraffin embedded human bladder carcinoma followed by peroxidase conjugation of the secondary antibody and DAB staining. This data demonstrates the use of YOD1 Antibody (C-term) for immunohistochemistry. Clinical relevance has not been evaluated.



Confocal immunofluorescent analysis of YOD1 Antibody (C-term) (Cat#TA324395) with WiDr cell followed by Alexa Fluor 488-conjugated goat anti-rabbit IgG (green). DAPI was used to stain the cell nuclear (blue).