

Product datasheet for **TA324394S**

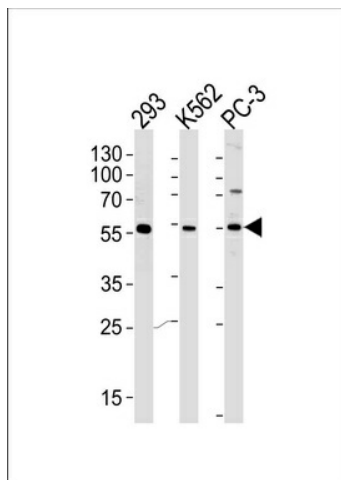
PIP5KL1 Rabbit Polyclonal Antibody

Product data:

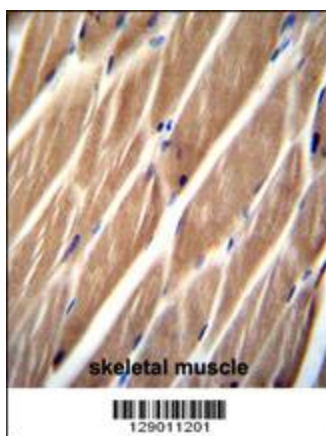
Product Type:	Primary Antibodies
Applications:	IF, IHC, WB
Recommended Dilution:	WB: 1:1000, IHC: 1:50~100, IF: 1:10~50
Reactivity:	Human
Host:	Rabbit
Isotype:	IgG
Clonality:	Polyclonal
Immunogen:	This PIP5KL1 antibody is generated from rabbits immunized with a KLH conjugated synthetic peptide between 57-86 amino acids from the N-terminal region of human PIP5KL1.
Formulation:	Purified polyclonal antibody supplied in PBS with 0.09% (W/V) sodium azide.
Concentration:	lot specific
Purification:	This antibody is purified through a protein A column, followed by peptide affinity purification.
Conjugation:	Unconjugated
Storage:	Store at -20°C as received.
Stability:	Stable for 12 months from date of receipt.
Predicted Protein Size:	44572 Da
Gene Name:	phosphatidylinositol-4-phosphate 5-kinase like 1
Database Link:	NP_775763 Entrez Gene 138429 Human Q5T9C9
Synonyms:	bA203J24.5; PIPKH
Protein Families:	Druggable Genome

[View online »](#)

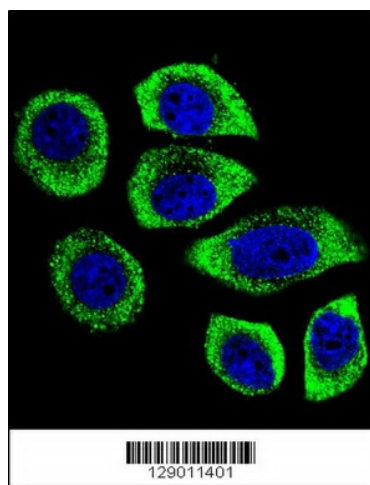
Product images:



Western blot analysis of lysates from 293, K562, PC-3 cell line (from left to right), using PIP5KL1 Antibody (N-term) (Cat. # [TA324394]). [TA324394] was diluted at 1:1000 at each lane. A goat anti-rabbit IgG H&L (HRP) at 1:5000 dilution was used as the secondary antibody. Lysates at 35ug per lane.



PIP5KL1 Antibody (N-term) (Cat. # [TA324394]) immunohistochemistry analysis in formalin fixed and paraffin embedded human skeletal muscle followed by peroxidase conjugation of the secondary antibody and DAB staining. This data demonstrates the use of PIP5KL1 Antibody (N-term) for immunohistochemistry. Clinical relevance has not been evaluated.



Confocal immunofluorescent analysis of PIP5KL1 Antibody (N-term) (Cat#[TA324394]) with U-251MG cell followed by Alexa Fluor 488-conjugated goat anti-rabbit IgG (green). DAPI was used to stain the cell nuclear (blue).