

Product datasheet for **TA324394**

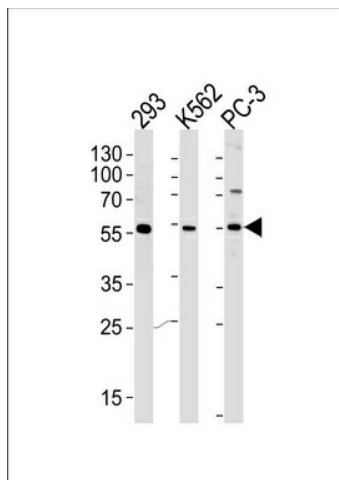
PIP5KL1 Rabbit Polyclonal Antibody

Product data:

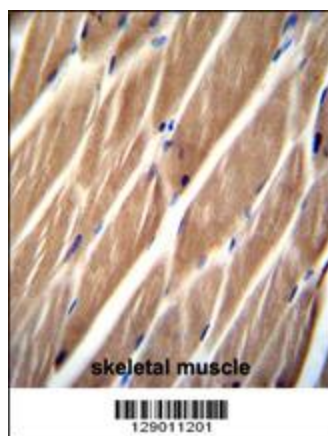
Product Type:	Primary Antibodies
Applications:	IF, IHC, WB
Recommended Dilution:	WB: 1:1000, IHC: 1:50~100, IF: 1:10~50
Reactivity:	Human
Host:	Rabbit
Isotype:	IgG
Clonality:	Polyclonal
Immunogen:	This PIP5KL1 antibody is generated from rabbits immunized with a KLH conjugated synthetic peptide between 57-86 amino acids from the N-terminal region of human PIP5KL1.
Formulation:	Purified polyclonal antibody supplied in PBS with 0.09% (W/V) sodium azide.
Concentration:	lot specific
Purification:	This antibody is purified through a protein A column, followed by peptide affinity purification.
Conjugation:	Unconjugated
Storage:	Store at -20°C as received.
Stability:	Stable for 12 months from date of receipt.
Predicted Protein Size:	44572 Da
Gene Name:	phosphatidylinositol-4-phosphate 5-kinase like 1
Database Link:	NP_775763 Entrez Gene 138429 Human Q5T9C9
Synonyms:	bA203J24.5; PIPKH
Protein Families:	Druggable Genome



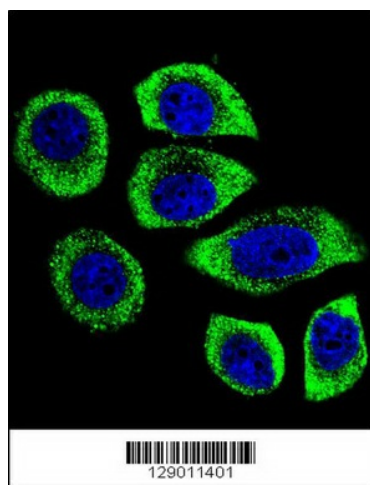
[View online »](#)

Product images:

Western blot analysis of lysates from 293, K562, PC-3 cell line (from left to right), using PIP5KL1 Antibody (N-term) (Cat. #TA324394).TA324394 was diluted at 1:1000 at each lane. A goat anti-rabbit IgG H&L (HRP) at 1:5000 dilution was used as the secondary antibody.Lysates at 35ug per lane.



PIP5KL1 Antibody (N-term) (Cat. #TA324394)immunohistochemistry analysis in formalin fixed and paraffin embedded human skeletal muscle followed by peroxidase conjugation of the secondary antibody and DAB staining.This data demonstrates the use of PIP5KL1 Antibody (N-term) for immunohistochemistry. Clinical relevance has not been evaluated.



Confocal immunofluorescent analysis of PIP5KL1 Antibody (N-term) (Cat#TA324394) with U-251MG cell followed by Alexa Fluor 488-conjugated goat anti-rabbit IgG (green). DAPI was used to stain the cell nuclear (blue).