

Product datasheet for **TA324393**

EXOC3L1 Rabbit Polyclonal Antibody

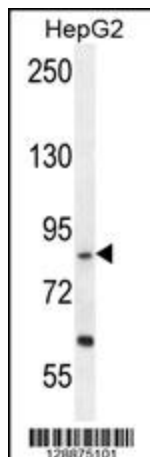
Product data:

Product Type:	Primary Antibodies
Applications:	IF, IHC, WB
Recommended Dilution:	WB: 1:1000, IHC: 1:10~50, IF: 1:10~50
Reactivity:	Human, Mouse (Predicted: Bovine)
Host:	Rabbit
Isotype:	IgG
Clonality:	Polyclonal
Immunogen:	This EXOC3L antibody is generated from rabbits immunized with a KLH conjugated synthetic peptide between 652-680 amino acids from the C-terminal region of human EXOC3L.
Formulation:	Purified polyclonal antibody supplied in PBS with 0.09% (W/V) sodium azide.
Concentration:	lot specific
Purification:	This antibody is purified through a protein A column, followed by peptide affinity purification.
Conjugation:	Unconjugated
Storage:	Store at -20°C as received.
Stability:	Stable for 12 months from date of receipt.
Predicted Protein Size:	81678 Da
Gene Name:	exocyst complex component 3 like 1
Database Link:	NP_848611 Entrez Gene 283849 Human Q86V11
Synonyms:	EXOC3L

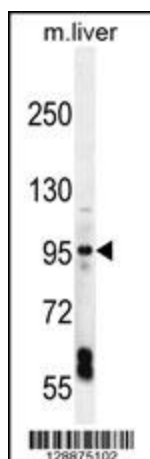


[View online »](#)

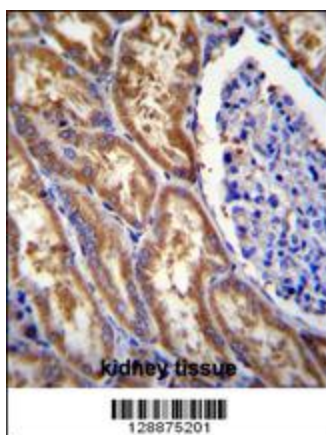
Product images:



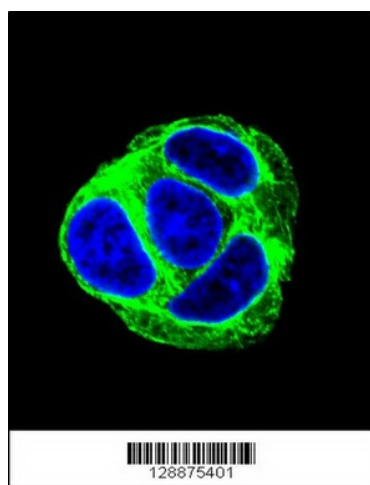
EXOC3L Antibody (C-term) (Cat. #TA324393) western blot analysis in HepG2 cell line lysates (35ug/lane). This demonstrates the EXOC3L antibody detected the EXOC3L protein (arrow).



EXOC3L Antibody (C-term) (Cat. #TA324393) western blot analysis in mouse liver tissue lysates (35ug/lane). This demonstrates the EXOC3L antibody detected the EXOC3L protein (arrow).



EXOC3L Antibody (C-term) (Cat. #TA324393) immunohistochemistry analysis in formalin fixed and paraffin embedded human kidney tissue followed by peroxidase conjugation of the secondary antibody and DAB staining. This data demonstrates the use of EXOC3L Antibody (C-term) for immunohistochemistry. Clinical relevance has not been evaluated.



Confocal immunofluorescent analysis of EXOC3L Antibody (C-term) (Cat#TA324393) with HepG2 cell followed by Alexa Fluor 488-conjugated goat anti-rabbit IgG (green). DAPI was used to stain the cell nuclear (blue).