

## Product datasheet for **TA324390**

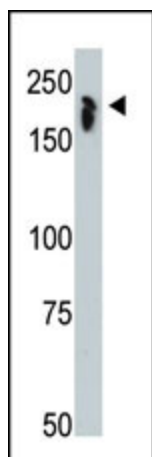
### NCoR (NCOR1) Rabbit Polyclonal Antibody

#### Product data:

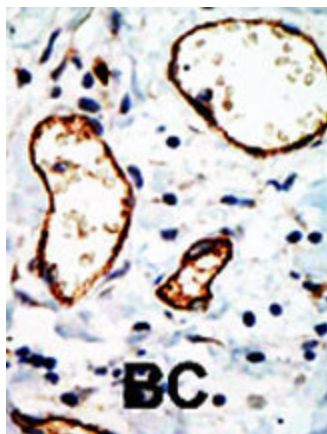
|                         |  |
|-------------------------|--|
| Product Type:           | Primary Antibodies   |
| Applications:           | IF, IHC, WB  |
| Recommended Dilution:   | WB: 1:1000, IHC: 1:50~100, IF: 1:10~50   |
| Reactivity:             | Human, Mouse   |
| Host:                   | Rabbit   |
| Isotype:                | IgG  |
| Clonality:              | Polyclonal   |
| Immunogen:              | This NCOR1 antibody is generated from rabbits immunized with a KLH conjugated synthetic peptide between 16-47 amino acids from the N-terminal region of human NCOR1. |
| Formulation:            | Purified polyclonal antibody supplied in PBS with 0.09% (W/V) sodium azide.  |
| Concentration:          | lot specific   |
| Purification:           | This antibody is prepared by Saturated Ammonium Sulfate (SAS) precipitation followed by dialysis against PBS.  |
| Conjugation:            | Unconjugated   |
| Storage:                | Store at -20°C as received.  |
| Stability:              | Stable for 12 months from date of receipt.   |
| Predicted Protein Size: | 270210 Da  |
| Gene Name:              | nuclear receptor corepressor 1   |
| Database Link:          | <a href="#">NP_006302</a><br><a href="#">Entrez Gene 20185 Mouse</a> <a href="#">Entrez Gene 9611 Human</a><br><a href="#">O75376</a>                                |
| Synonyms:               | hN-CoR; N-CoR; N-CoR1; PPP1R109; TRAC1   |
| Protein Families:       | Druggable Genome   |



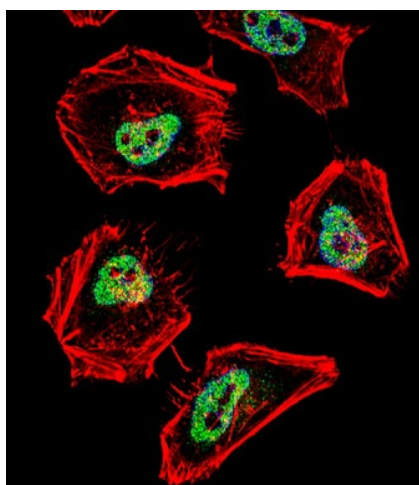
[View online »](#)

**Product images:**

The anti-NCOR1 Pab (Cat. #TA324390) is used in Western blot to detect NCOR1 in mouse thymus tissue lysate.



Formalin-fixed and paraffin-embedded human cancer tissue reacted with the primary antibody, which was peroxidase-conjugated to the secondary antibody, followed by DAB staining. This data demonstrates the use of this antibody for immunohistochemistry; clinical relevance has not been evaluated. BC = breast carcinoma; HC = hepatocarcinoma.



IF image of HeLa cell stained with (MOUSE) Ncor1 Antibody (Cat#TA324390). HeLa cells were incubated with Ncor1 primary antibody (1:25, 1 h at 37°C). For secondary antibody, Alexa Fluor® 488 conjugated donkey anti-rabbit antibody (1:400). Cytoplasmic actin was counterstained with Alexa Fluor® 555 (red) conjugated Phalloidin (7 units/ml). Nuclei were counterstained with DAPI (blue). Ncor1 immunoreactivity is localized to nucleus significantly.