

Product datasheet for **TA324388**

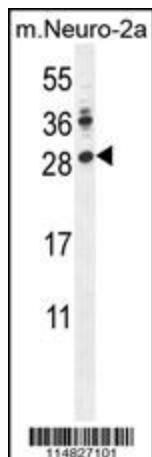
Lin28 (LIN28A) Rabbit Polyclonal Antibody

Product data:

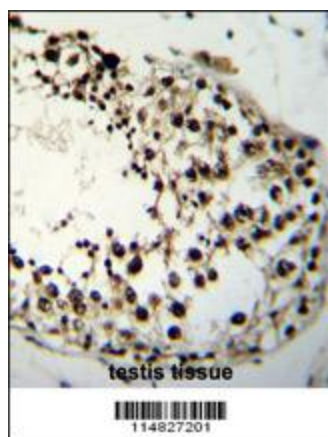
Product Type:	Primary Antibodies
Applications:	FC, IF, IHC, WB
Recommended Dilution:	IF: 1:10~50, WB: 1:1000, IHC: 1:50~100, FC: 1:10~50
Reactivity:	Mouse
Host:	Rabbit
Isotype:	IgG
Clonality:	Polyclonal
Immunogen:	This LIN28A antibody is generated from rabbits immunized with a KLH conjugated synthetic peptide between 108-138 amino acids from the Central region of human LIN28A.
Formulation:	Purified polyclonal antibody supplied in PBS with 0.09% (W/V) sodium azide.
Concentration:	lot specific
Purification:	This antibody is prepared by Saturated Ammonium Sulfate (SAS) precipitation followed by dialysis against PBS.
Conjugation:	Unconjugated
Storage:	Store at -20°C as received.
Stability:	Stable for 12 months from date of receipt.
Predicted Protein Size:	22743 Da
Gene Name:	lin-28 homolog A
Database Link:	NP_078950 Entrez Gene 83557 Mouse Q9H9Z2
Synonyms:	CSDD1; LIN-28; lin-28A; LIN28; ZCCHC1
Protein Families:	Transcription Factors



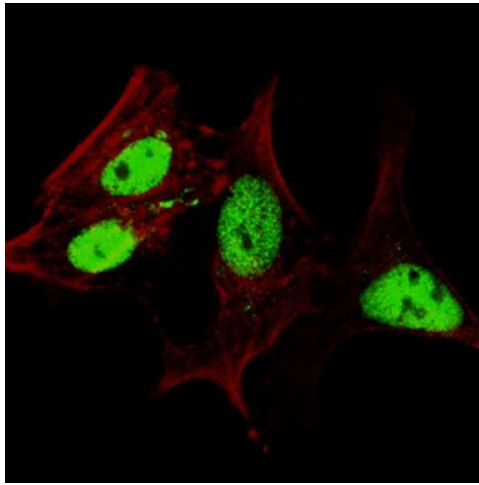
[View online »](#)

Product images:

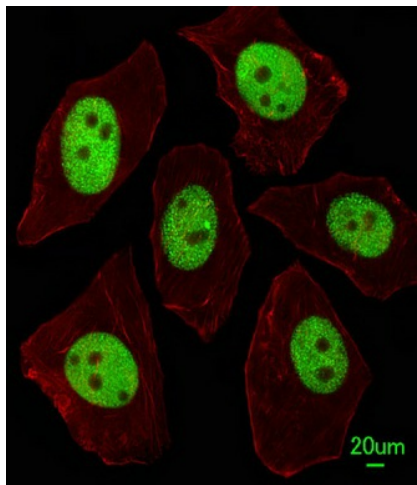
LIN28A Antibody (Center) (Cat. #TA324388) western blot analysis in mouse Neuro-2a cell line lysates (35ug/lane). This demonstrates the LIN28A antibody detected the LIN28A protein (arrow).



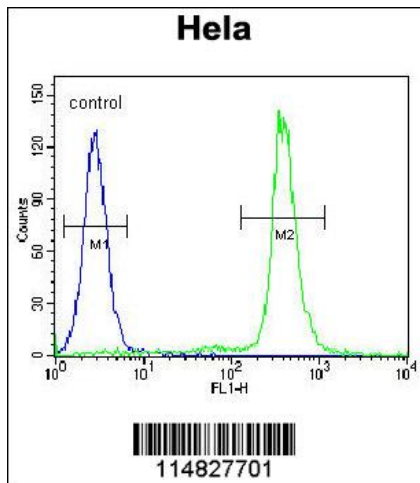
LIN28A Antibody (Center) (Cat. #TA324388) immunohistochemistry analysis in formalin fixed and paraffin embedded human testis tissue followed by peroxidase conjugation of the secondary antibody and DAB staining. This data demonstrates the use of LIN28A Antibody (Center) for immunohistochemistry. Clinical relevance has not been evaluated.



IF image of SY5Y cells stained with TA324388 LIN28A (Center) antibody. SY5Y cells were incubated with TA324388 LIN28A (Center) primary antibody (1:200, 2 h at RT). For secondary antibody, Alexa Fluor® 488 conjugated donkey anti-rabbit antibody (green) was used (1:1000, 1h). Cytoplasmic actin was counterstained with Alexa Fluor® 555 (red) conjugated Phalloidin. Lin28a immunoreactivity is localized very specifically to the nuclei of the SY5Y cells.



Immunofluorescent analysis of A549 cells, using LIN28A Antibody (Center) (Cat. #TA324388). TA324388 was diluted at 1:100 dilution. Alexa Fluor 488-conjugated goat anti-rabbit IgG at 1:400 dilution was used as the secondary antibody (green). Cytoplasmic actin was counterstained with Dylight Fluor® 554 (red) conjugated Phalloidin (red).



LIN28A Antibody (Center) (Cat. #TA324388) flow cytometric analysis of HeLa cells (right histogram) compared to a negative control cell (left histogram). FITC-conjugated goat-anti-rabbit secondary antibodies were used for the analysis.