

Product datasheet for **TA324387**

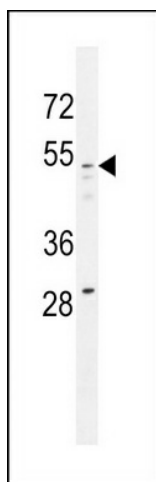
GOLGA8A Rabbit Polyclonal Antibody

Product data:

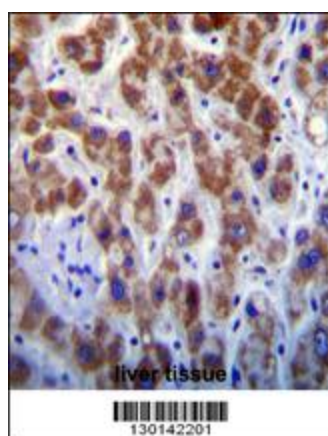
Product Type:	Primary Antibodies
Applications:	IF, IHC, WB
Recommended Dilution:	WB: 1:1000, IHC: 1:10~50, IF: 1:10~50
Reactivity:	Human
Host:	Rabbit
Isotype:	IgG
Clonality:	Polyclonal
Immunogen:	This GOG8A antibody is generated from rabbits immunized with a KLH conjugated synthetic peptide between 129-157 amino acids from the N-terminal region of human GOG8A.
Formulation:	Purified polyclonal antibody supplied in PBS with 0.09% (W/V) sodium azide.
Concentration:	lot specific
Purification:	This antibody is purified through a protein A column, followed by peptide affinity purification.
Conjugation:	Unconjugated
Storage:	Store at -20°C as received.
Stability:	Stable for 12 months from date of receipt.
Predicted Protein Size:	70117 Da
Gene Name:	golgin A8 family member A
Database Link:	NP_851422 Entrez Gene 23015 Human A7E2F4
Synonyms:	GM88

[View online »](#)

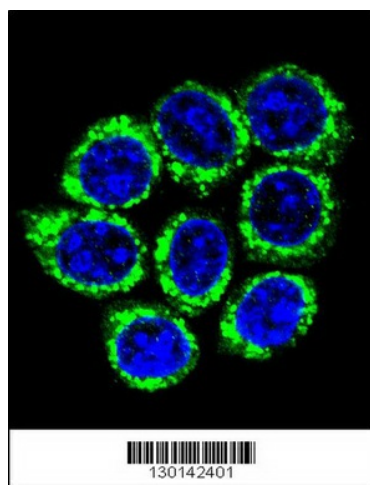
Product images:



GOG8A Antibody (N-term) (Cat. #TA324387) western blot analysis in 293 cell line lysates (35ug/lane). This demonstrates the GOG8A antibody detected the GOG8A protein (arrow).



GOG8A Antibody (N-term) (Cat. #TA324387) immunohistochemistry analysis in formalin fixed and paraffin embedded human liver tissue followed by peroxidase conjugation of the secondary antibody and DAB staining. This data demonstrates the use of GOG8A Antibody (N-term) for immunohistochemistry. Clinical relevance has not been evaluated.



Confocal immunofluorescent analysis of GOLGA8A Antibody (N-term) (Cat#TA324387) with 293 cell followed by Alexa Fluor 488-conjugated goat anti-rabbit IgG (green). DAPI was used to stain the cell nuclear (blue).