

Product datasheet for **TA324386**

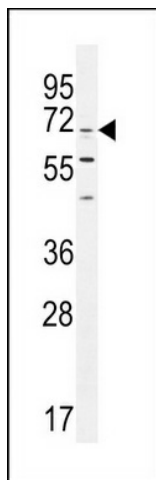
INT11 (CPSF3L) Rabbit Polyclonal Antibody

Product data:

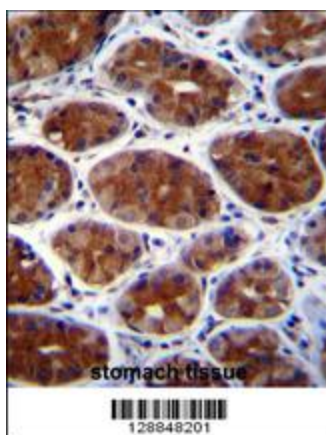
Product Type:	Primary Antibodies
Applications:	IF, IHC, WB
Recommended Dilution:	WB: 1:1000, IHC: 1:10~50, IF: 1:10~50
Reactivity:	Human (Predicted: Mouse, Rat, Bovine)
Host:	Rabbit
Isotype:	IgG
Clonality:	Polyclonal
Immunogen:	This CPSF3L antibody is generated from rabbits immunized with a KLH conjugated synthetic peptide between 91-119 amino acids from the N-terminal region of human CPSF3L.
Formulation:	Purified polyclonal antibody supplied in PBS with 0.09% (W/V) sodium azide.
Concentration:	lot specific
Purification:	This antibody is purified through a protein A column, followed by peptide affinity purification.
Conjugation:	Unconjugated
Storage:	Store at -20°C as received.
Stability:	Stable for 12 months from date of receipt.
Predicted Protein Size:	67663 Da
Gene Name:	cleavage and polyadenylation specific factor 3-like
Database Link:	NP_115555 Entrez Gene 71957 Mouse Entrez Gene 298688 Rat Entrez Gene 54973 Human Q5TA45
Synonyms:	cleavage and polyadenylation specific factor 3-like; CPSF73L; FLJ13294; FLJ20542; INT11; integrator complex subunit 11; INTS11; OTTHUMP00000044092; RC-68; RC68; related to CPSF subunits 68 kDa



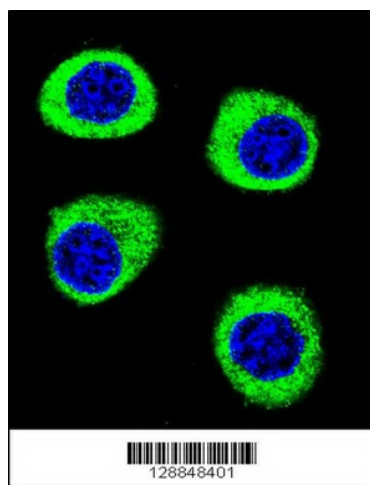
[View online »](#)

Product images:

CPSF3L Antibody (N-term) (Cat. #TA324386) western blot analysis in K562 cell line lysates (35ug/lane). This demonstrates the CPSF3L antibody detected the CPSF3L protein (arrow).



CPSF3L Antibody (N-term) (Cat. #TA324386) immunohistochemistry analysis in formalin fixed and paraffin embedded human stomach tissue followed by peroxidase conjugation of the secondary antibody and DAB staining. This data demonstrates the use of CPSF3L Antibody (N-term) for immunohistochemistry. Clinical relevance has not been evaluated.



Confocal immunofluorescent analysis of CPSF3L Antibody (N-term) (Cat#TA324386) with U-251MG cell followed by Alexa Fluor 488-conjugated goat anti-rabbit IgG (green). DAPI was used to stain the cell nuclear (blue).