

Product datasheet for **TA324383**

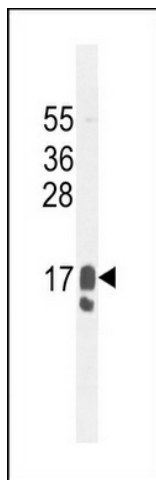
GCDFP 15 (PIP) Rabbit Polyclonal Antibody

Product data:

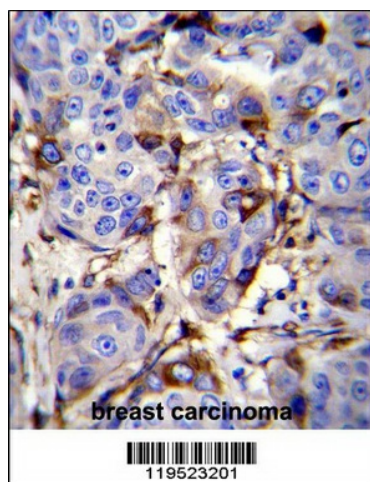
Product Type:	Primary Antibodies
Applications:	IF, IHC, WB
Recommended Dilution:	WB: 1:1000, IF: 1:10~50, IHC: 1:10~50
Reactivity:	Human
Host:	Rabbit
Isotype:	IgG
Clonality:	Polyclonal
Immunogen:	This GCDFP-15 antibody is generated from rabbits immunized with a KLH conjugated synthetic peptide between 77-106 amino acids from the C-terminal region of human GCDFP-15.
Formulation:	Purified polyclonal antibody supplied in PBS with 0.09% (W/V) sodium azide.
Concentration:	lot specific
Purification:	This antibody is purified through a protein A column, followed by peptide affinity purification.
Conjugation:	Unconjugated
Storage:	Store at -20°C as received.
Stability:	Stable for 12 months from date of receipt.
Predicted Protein Size:	16572 Da
Gene Name:	prolactin induced protein
Database Link:	NP_002643 Entrez Gene 5304 Human P12273
Synonyms:	GCDFP-15; GCDFP15; GPIP4
Protein Families:	Secreted Protein



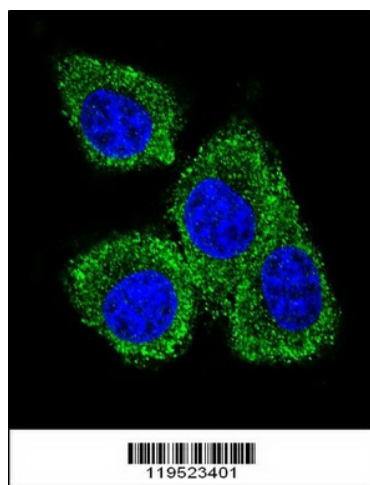
[View online »](#)

Product images:

GCDFP-15 Antibody (C-term) (Cat. #TA324383) western blot analysis in MDA-MB231 cell line lysates (35ug/lane). This demonstrates the GCDFP-15 antibody detected the GCDFP-15 protein (arrow).



GCDFP-15 Antibody (C-term) (Cat. #TA324383) immunohistochemistry analysis in formalin fixed and paraffin embedded human breast carcinoma followed by peroxidase conjugation of the secondary antibody and DAB staining. This data demonstrates the use of GCDFP-15 Antibody (C-term) for immunohistochemistry. Clinical relevance has not been evaluated.



Confocal immunofluorescent analysis of GCDFP-15 Antibody (C-term) (Cat#TA324383) with MDA-MB231 cell followed by Alexa Fluor 488-conjugated goat anti-rabbit IgG (green). DAPI was used to stain the cell nuclear (blue).