

Product datasheet for **TA324382**

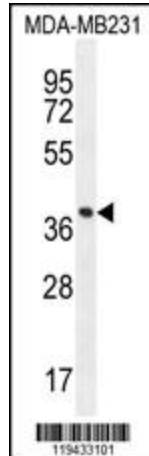
FOXA2 Rabbit Polyclonal Antibody

Product data:

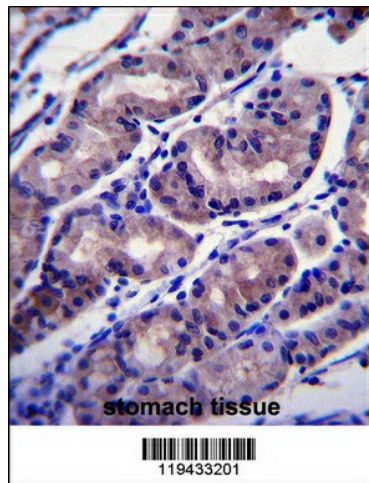
Product Type:	Primary Antibodies
Applications:	IF, IHC, WB
Recommended Dilution:	WB: 1:1000, IHC: 1:10~50, IF: 1:10~50
Reactivity:	Human (Predicted: Mouse, Rat)
Host:	Rabbit
Isotype:	IgG
Clonality:	Polyclonal
Immunogen:	This FOXA2 antibody is generated from rabbits immunized with a KLH conjugated synthetic peptide between 128-157 amino acids from the Central region of human FOXA2.
Formulation:	Purified polyclonal antibody supplied in PBS with 0.09% (W/V) sodium azide.
Concentration:	lot specific
Purification:	This antibody is purified through a protein A column, followed by peptide affinity purification.
Conjugation:	Unconjugated
Storage:	Store at -20°C as received.
Stability:	Stable for 12 months from date of receipt.
Predicted Protein Size:	48306 Da
Gene Name:	forkhead box A2
Database Link:	NP_068556 Entrez Gene 15376 Mouse Entrez Gene 25099 Rat Entrez Gene 3170 Human Q9Y261
Synonyms:	HNF3B; TCF3B
Protein Families:	Embryonic stem cells, ES Cell Differentiation/IPS, Induced pluripotent stem cells, Transcription Factors
Protein Pathways:	Maturity onset diabetes of the young



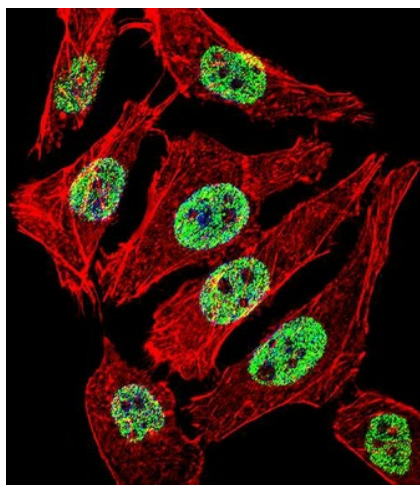
[View online »](#)

Product images:


FOXA2 Antibody (Center) (Cat. #TA324382) western blot analysis in MDA-MB231 cell line lysates (35ug/lane). This demonstrates the FOXA2 antibody detected the FOXA2 protein (arrow).



FOXA2 Antibody (Center) (Cat. #TA324382) immunohistochemistry analysis in formalin fixed and paraffin embedded human stomach tissue followed by peroxidase conjugation of the secondary antibody and DAB staining. This data demonstrates the use of FOXA2 Antibody (Center) for immunohistochemistry. Clinical relevance has not been evaluated.



IF image of A549 cell stained with FOXA2 Antibody (Center) (Cat#TA324382). A549 cells were incubated with FOXA2 primary antibody (1:25, 1 h at 37°C). For secondary antibody, Alexa Fluor® 488 conjugated donkey anti-rabbit antibody (green) was used (1:400). Cytoplasmic actin was counterstained with Alexa Fluor® 555 (red) conjugated Phalloidin (7 units/ml). Nuclei were counterstained with DAPI (blue). FOXA2 immunoreactivity is localized to Nucleus significantly.