

## Product datasheet for **TA324381**

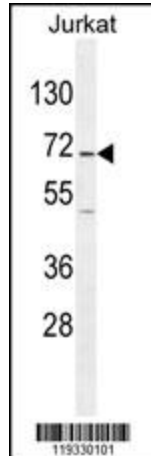
### **GAD65 (GAD2) Rabbit Polyclonal Antibody**

#### **Product data:**

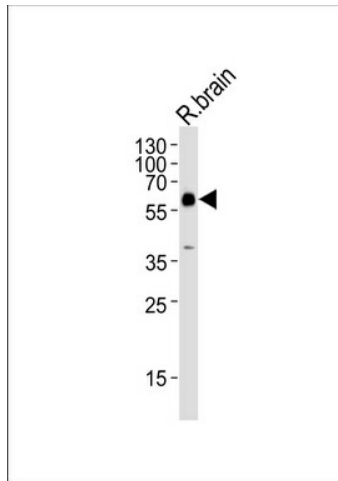
<b>Product Type:</b>	Primary Antibodies
<b>Applications:</b>	IF, IHC, WB
<b>Recommended Dilution:</b>	WB: 1:1000, IHC: 1:50~100, IF: 1:10~50
<b>Reactivity:</b>	Human (Predicted: Mouse, Rat, Pig)
<b>Host:</b>	Rabbit
<b>Isotype:</b>	IgG
<b>Clonality:</b>	Polyclonal
<b>Immunogen:</b>	This GAD2 antibody is generated from rabbits immunized with a KLH conjugated synthetic peptide between 109-138 amino acids from the Central region of human GAD2.
<b>Formulation:</b>	Purified polyclonal antibody supplied in PBS with 0.09% (W/V) sodium azide.
<b>Concentration:</b>	lot specific
<b>Purification:</b>	This antibody is purified through a protein A column, followed by peptide affinity purification.
<b>Conjugation:</b>	Unconjugated
<b>Storage:</b>	Store at -20°C as received.
<b>Stability:</b>	Stable for 12 months from date of receipt.
<b>Predicted Protein Size:</b>	65411 Da
<b>Gene Name:</b>	glutamate decarboxylase 2
<b>Database Link:</b>	<a href="#">NP_000809</a> <a href="#">Entrez Gene 14417 Mouse</a> <a href="#">Entrez Gene 24380 Rat</a> <a href="#">Entrez Gene 2572 Human</a> <a href="#">Q05329</a>
<b>Synonyms:</b>	GAD65
<b>Protein Families:</b>	Druggable Genome
<b>Protein Pathways:</b>	Alanine, aspartate and glutamate metabolism, beta-Alanine metabolism, Butanoate metabolism, Metabolic pathways, Taurine and hypotaurine metabolism, Type I diabetes mellitus



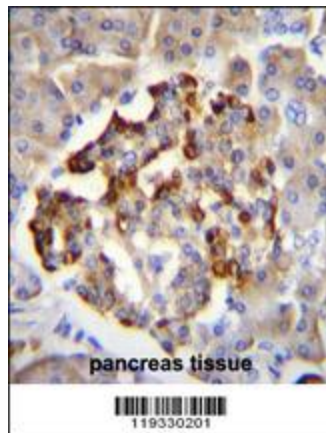
[View online »](#)

**Product images:**


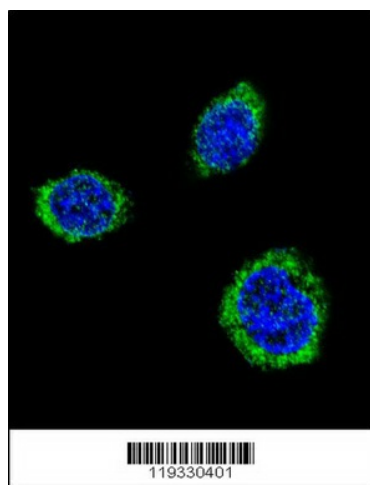
GAD2 Antibody (Center) (Cat. #TA324381) western blot analysis in Jurkat cell line lysates (35ug/lane). This demonstrates the GAD2 antibody detected the GAD2 protein (arrow).



Western blot analysis of lysate from rat brain tissue lysate, using GAD2 Antibody (Center) (Cat. #TA324381). TA324381 was diluted at 1:1000. A goat anti-rabbit IgG H&L (HRP) at 1:5000 dilution was used as the secondary antibody. Lysate at 35ug.



GAD2 Antibody (Center) (Cat. #TA324381) immunohistochemistry analysis in formalin fixed and paraffin embedded human pancreas tissue followed by peroxidase conjugation of the secondary antibody and DAB staining. This data demonstrates the use of GAD2 Antibody (Center) for immunohistochemistry. Clinical relevance has not been evaluated.



Confocal immunofluorescent analysis of GAD2 Antibody (Center) (Cat. #TA324381) with 293 cell followed by Alexa Fluor<sup>®</sup> 488-conjugated goat anti-rabbit IgG (green). DAPI was used to stain the cell nuclear (blue).