

Product datasheet for **TA324380S**

CNOT7 Rabbit Polyclonal Antibody

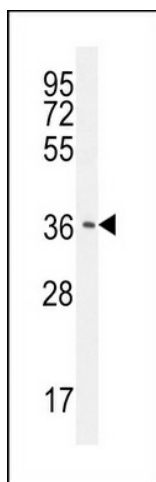
Product data:

Product Type:	Primary Antibodies
Applications:	IF, IHC, WB
Recommended Dilution:	WB: 1:1000, IHC: 1:50~100, IF: 1:10~50
Reactivity:	Human (Predicted: Mouse, Zebrafish, Bovine, Chicken, Xenopus)
Host:	Rabbit
Isotype:	IgG
Clonality:	Polyclonal
Immunogen:	This CAF-1 antibody is generated from rabbits immunized with a KLH conjugated synthetic peptide between 34-61 amino acids from the N-terminal region of human CAF-1.
Formulation:	Purified polyclonal antibody supplied in PBS with 0.09% (W/V) sodium azide.
Concentration:	lot specific
Purification:	This antibody is purified through a protein A column, followed by peptide affinity purification.
Conjugation:	Unconjugated
Storage:	Store at -20°C as received.
Stability:	Stable for 12 months from date of receipt.
Predicted Protein Size:	32745 Da
Gene Name:	CCR4-NOT transcription complex subunit 7
Database Link:	NP_037486 Entrez Gene 18983 Mouse Entrez Gene 29883 Human Q9UIV1
Synonyms:	CAF1; Caf1a; hCAF-1
Protein Families:	Transcription Factors
Protein Pathways:	RNA degradation

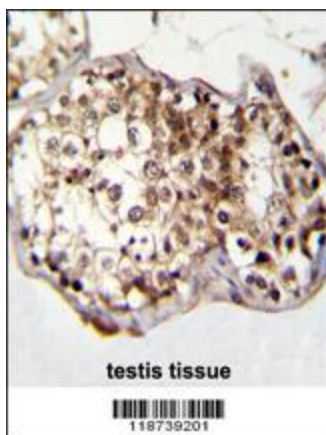


[View online »](#)

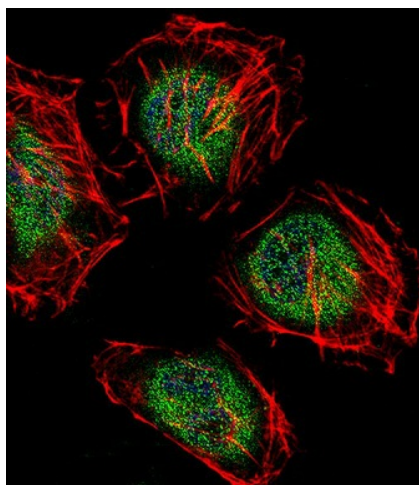
Product images:



CAF-1 Antibody (N-term) (Cat. #TA324380]) western blot analysis in HepG2 cell line lysates (35ug/lane). This demonstrates the CAF-1 antibody detected the CAF-1 protein (arrow).



CAF-1 Antibody (N-term) (Cat. # [TA324380]) immunohistochemistry analysis in formalin fixed and paraffin embedded human testis tissue followed by peroxidase conjugation of the secondary antibody and DAB staining. This data demonstrates the use of CAF-1 Antibody (N-term) for immunohistochemistry. Clinical relevance has not been evaluated.



IF image of HeLa cell stained with CAF-1 Antibody (N-term) (Cat#[TA324380]). HeLa cells were incubated with CAF-1 primary antibody (1:25, 1 h at 37°C). For secondary antibody, Alexa Fluor® 488 conjugated donkey anti-rabbit antibody (green) was used (1:400). Cytoplasmic actin was counterstained with Alexa Fluor® 555 (red) conjugated Phalloidin (7 units/ml). Nuclei were counterstained with DAPI (blue). CAF-1 immunoreactivity is localized to Cytoplasm and Nucleus significantly.