

Product datasheet for TA324379S

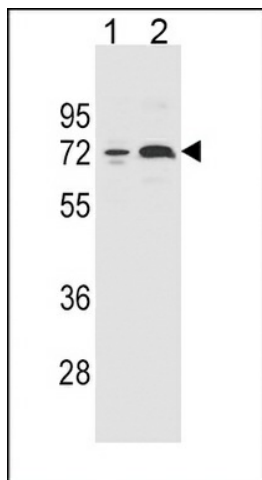
Cytochrome P450 2B6 (CYP2B6) Rabbit Polyclonal Antibody

Product data:

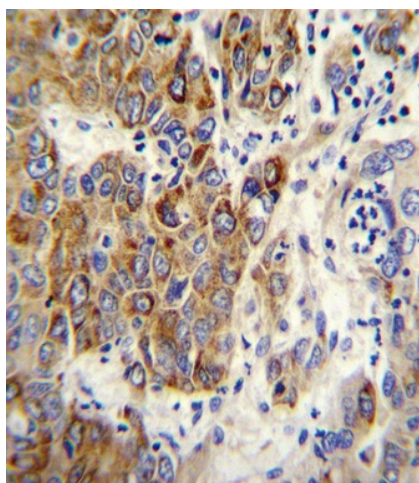
Product Type:	Primary Antibodies
Applications:	IF, IHC, WB
Recommended Dilution:	WB: 1:1000, IHC: 1:10~50, IF: 1:10~50
Reactivity:	Human
Host:	Rabbit
Isotype:	IgG
Clonality:	Polyclonal
Immunogen:	This CYP2B6 antibody is generated from rabbits immunized with a KLH conjugated synthetic peptide between 235-263 amino acids from the Central region of human CYP2B6.
Formulation:	Purified polyclonal antibody supplied in PBS with 0.09% (W/V) sodium azide.
Concentration:	lot specific
Purification:	This antibody is purified through a protein A column, followed by peptide affinity purification.
Conjugation:	Unconjugated
Storage:	Store at -20°C as received.
Stability:	Stable for 12 months from date of receipt.
Predicted Protein Size:	56278 Da
Gene Name:	cytochrome P450 family 2 subfamily B member 6
Database Link:	NP_000758 Entrez Gene 1555 Human P20813
Synonyms:	CPB6; CYP2B; CYP2B7; CYP2B7P; CYP11B6; EFVM; IIB1; P450
Protein Families:	Druggable Genome, P450
Protein Pathways:	Arachidonic acid metabolism, Drug metabolism - cytochrome P450, Metabolic pathways, Metabolism of xenobiotics by cytochrome P450, Retinol metabolism


[View online »](#)

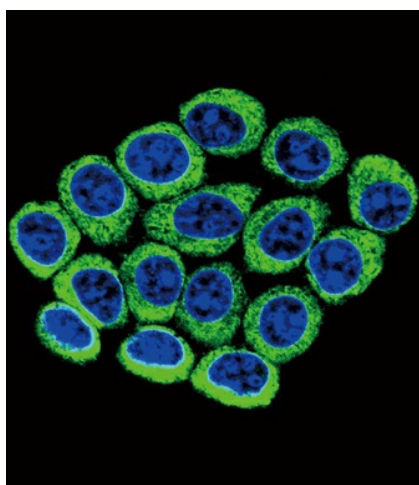
Product images:



CYP2B6 Antibody (Center) (Cat. # [TA324379]) western blot analysis in 293 (lane 1) and K562 (lane 2) cell line lysates (35ug/lane). This demonstrates the CYP2B6 antibody detected the CYP2B6 protein (arrow).



CYP2B6 Antibody (Center) (Cat. # [TA324379]) immunohistochemistry analysis in formalin fixed and paraffin embedded human hepatocarcinoma followed by peroxidase conjugation of the secondary antibody and DAB staining. This data demonstrates the use of CYP2B6 Antibody (Center) for immunohistochemistry. Clinical relevance has not been evaluated.



Confocal immunofluorescent analysis of CYP2B6 Antibody (Center) (Cat#[TA324379]) with 293 cell followed by Alexa Fluor 488-conjugated goat anti-rabbit IgG (green). DAPI was used to stain the cell nuclear (blue).