

Product datasheet for **TA324376**

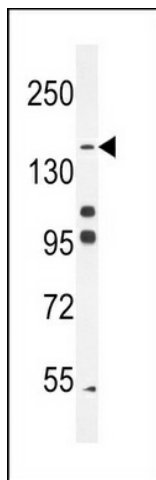
DEP1 (PTPRJ) Rabbit Polyclonal Antibody

Product data:

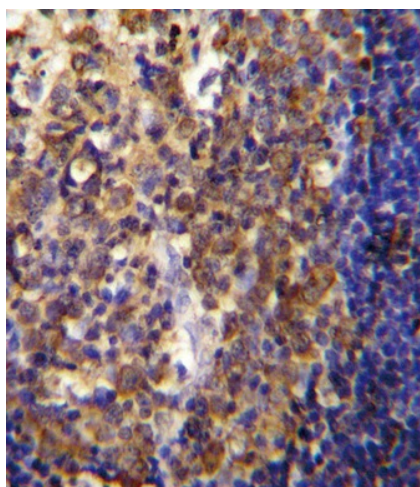
Product Type:	Primary Antibodies
Applications:	IF, IHC, WB
Recommended Dilution:	WB: 1:1000, IHC: 1:10~50, IF: 1:10~50
Reactivity:	Human
Host:	Rabbit
Isotype:	IgG
Clonality:	Polyclonal
Immunogen:	Poly-HIS protein were used to produced this antibody.
Formulation:	Purified polyclonal antibody supplied in PBS with 0.09% (W/V) sodium azide.
Concentration:	lot specific
Purification:	This antibody is purified through a protein A column, followed by dialysis against PBS.
Conjugation:	Unconjugated
Storage:	Store at -20°C as received.
Stability:	Stable for 12 months from date of receipt.
Predicted Protein Size:	145941 Da
Gene Name:	protein tyrosine phosphatase, receptor type J
Database Link:	NP_002834 Entrez Gene 5795 Human Q12913
Synonyms:	CD148; DEP1; HPTPeta; R-PTP-ETA; SCC1
Protein Families:	Druggable Genome, Phosphatase, Transmembrane
Protein Pathways:	Adherens junction



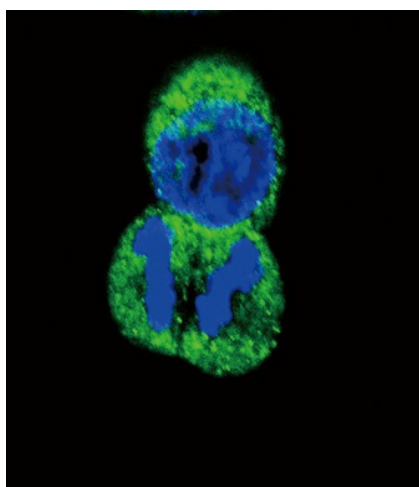
[View online »](#)

Product images:

His6-DEP-1 (Cat. #TA324376) western blot analysis in K562 cell line lysates (35ug/lane). This demonstrates the DEP-1 antibody detected the DEP-1 protein (arrow).



His6-DEP-1 Antibody (Cat. #TA324376) immunohistochemistry analysis in formalin fixed and paraffin embedded human tonsil tissue followed by peroxidase conjugation of the secondary antibody and DAB staining. This data demonstrates the use of His6-DEP-1 Antibody for immunohistochemistry. Clinical relevance has not been evaluated.



Confocal immunofluorescent analysis of His6-DEP-1 Antibody (Cat. #TA324376) with HeLa cell followed by Alexa Fluor[®] 488-conjugated goat anti-rabbit IgG (green). DAPI was used to stain the cell nuclear (blue).