

Product datasheet for TA324375S

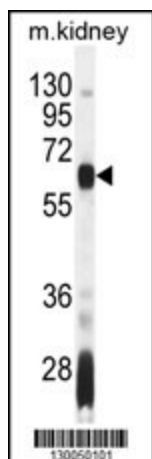
AIRE Rabbit Polyclonal Antibody

Product data:

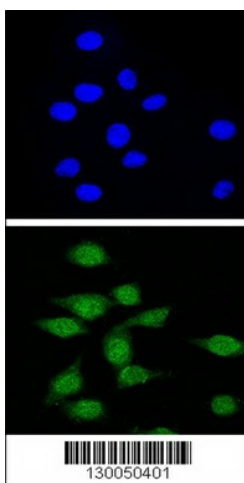
Product Type:	Primary Antibodies
Applications:	IF, WB
Recommended Dilution:	WB: 1:1000, IF: 1:10~50
Reactivity:	Human, Mouse
Host:	Rabbit
Isotype:	IgG
Clonality:	Polyclonal
Immunogen:	This AIRE antibody is generated from rabbits immunized with a KLH conjugated synthetic peptide between 64-92 amino acids from the Central region of human AIRE.
Formulation:	Purified polyclonal antibody supplied in PBS with 0.09% (W/V) sodium azide.
Concentration:	lot specific
Purification:	This antibody is purified through a protein A column, followed by peptide affinity purification.
Conjugation:	Unconjugated
Storage:	Store at -20°C as received.
Stability:	Stable for 12 months from date of receipt.
Predicted Protein Size:	57727 Da
Gene Name:	autoimmune regulator
Database Link:	NP_000374 Entrez Gene 11634 Mouse Entrez Gene 326 Human O43918
Synonyms:	AIRE1; APECED; APS1; APSI; PGA1
Protein Families:	Druggable Genome
Protein Pathways:	Primary immunodeficiency, Ubiquitin mediated proteolysis


[View online »](#)

Product images:



AIRE Antibody (Center) (Cat. #TA324375])
western blot analysis in mouse kidney tissue
lysates (35ug/lane).This demonstrates the AIRE
antibody detected the AIRE protein (arrow).



Confocal immunofluorescent analysis of AIRE
Antibody (Center) (Cat. #TA324375]) with 293 cell
followed by Alexa Fluor® 488-conjugated goat
anti-rabbit IgG (green). DAPI was used to stain
the cell nuclear (blue).