

## Product datasheet for **TA324375**

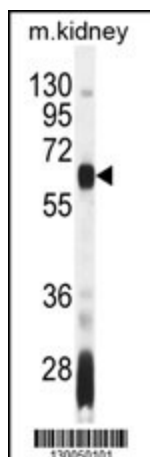
### AIRE Rabbit Polyclonal Antibody

#### Product data:

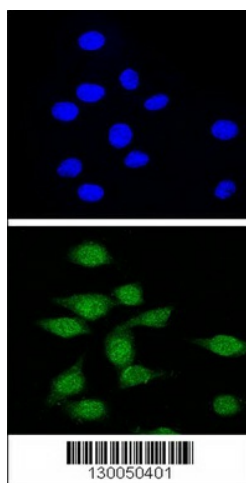
Product Type:	Primary Antibodies
Applications:	IF, WB
Recommended Dilution:	WB: 1:1000, IF: 1:10~50
Reactivity:	Human, Mouse
Host:	Rabbit
Isotype:	IgG
Clonality:	Polyclonal
Immunogen:	This AIRE antibody is generated from rabbits immunized with a KLH conjugated synthetic peptide between 64-92 amino acids from the Central region of human AIRE.
Formulation:	Purified polyclonal antibody supplied in PBS with 0.09% (W/V) sodium azide.
Concentration:	lot specific
Purification:	This antibody is purified through a protein A column, followed by peptide affinity purification.
Conjugation:	Unconjugated
Storage:	Store at -20°C as received.
Stability:	Stable for 12 months from date of receipt.
Predicted Protein Size:	57727 Da
Gene Name:	autoimmune regulator
Database Link:	<a href="#">NP_000374</a> <a href="#">Entrez Gene 11634 Mouse</a> <a href="#">Entrez Gene 326 Human</a> <a href="#">O43918</a>
Synonyms:	AIRE1; APECED; APS1; APSI; PGA1
Protein Families:	Druggable Genome
Protein Pathways:	Primary immunodeficiency, Ubiquitin mediated proteolysis



[View online »](#)

**Product images:**

AIRE Antibody (Center) (Cat. #TA324375) western blot analysis in mouse kidney tissue lysates (35ug/lane). This demonstrates the AIRE antibody detected the AIRE protein (arrow).



Confocal immunofluorescent analysis of AIRE Antibody (Center) (Cat. #TA324375) with 293 cell followed by Alexa Fluor® 488-conjugated goat anti-rabbit IgG (green). DAPI was used to stain the cell nuclear (blue).