

Product datasheet for **TA324374**

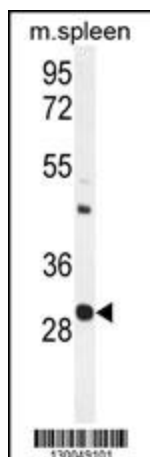
USF1 Rabbit Polyclonal Antibody

Product data:

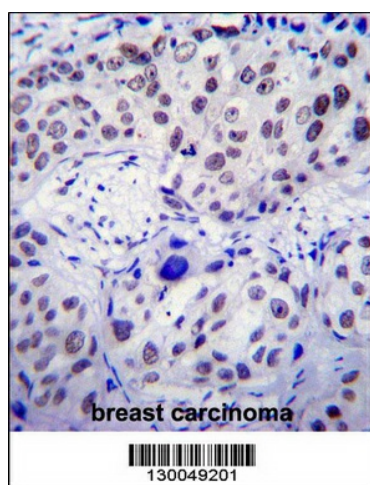
Product Type:	Primary Antibodies
Applications:	FC, IF, IHC, WB
Recommended Dilution:	WB: 1:1000, FC: 1:10~50, IF: 1:10~50, IHC: 1:10~50
Reactivity:	Human, Mouse (Predicted: Bovine)
Host:	Rabbit
Isotype:	IgG
Clonality:	Polyclonal
Immunogen:	This USF1 antibody is generated from rabbits immunized with a KLH conjugated synthetic peptide between 174-201 amino acids from the Central region of human USF1.
Formulation:	Purified polyclonal antibody supplied in PBS with 0.09% (W/V) sodium azide.
Concentration:	lot specific
Purification:	This antibody is purified through a protein A column, followed by peptide affinity purification.
Conjugation:	Unconjugated
Storage:	Store at -20°C as received.
Stability:	Stable for 12 months from date of receipt.
Predicted Protein Size:	33538 Da
Gene Name:	upstream transcription factor 1
Database Link:	NP_996888 Entrez Gene 22278 Mouse Entrez Gene 7391 Human P22415
Synonyms:	bHLHb11; FCHL; FCHL1; HYPLIP1; MLTF; MLTFI; UEF
Protein Families:	Druggable Genome, Transcription Factors



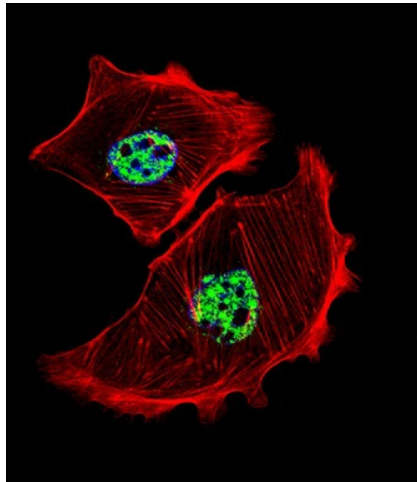
[View online »](#)

Product images:

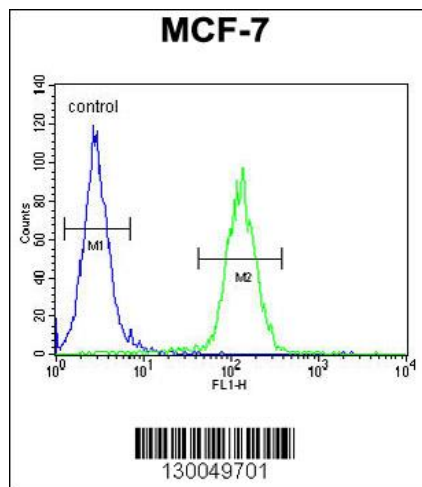
USF1 Antibody (Center) (Cat. #TA324374) western blot analysis in mouse spleen tissue lysates (35ug/lane). This demonstrates the USF1 antibody detected the USF1 protein (arrow).



USF1 Antibody (Center) (Cat. #TA324374) immunohistochemistry analysis in formalin fixed and paraffin embedded human breast carcinoma followed by peroxidase conjugation of the secondary antibody and DAB staining. This data demonstrates the use of USF1 Antibody (Center) for immunohistochemistry. Clinical relevance has not been evaluated.



IF image of SK-BR-3 cell stained with USF1 Antibody (Center) (Cat#TA324374). SK-BR-3 cells were incubated with USF1 primary antibody (1:25, 1 h at 37°C). For secondary antibody, Alexa Fluor® 488 conjugated donkey anti-rabbit antibody (green) was used (1:400). Cytoplasmic actin was counterstained with Alexa Fluor® 555 (red) conjugated Phalloidin (7 units/ml). Nuclei were counterstained with DAPI (blue). USF1 immunoreactivity is localized to nucleus significantly.



USF1 Antibody (Center) (Cat. #TA324374) flow cytometric analysis of MCF-7 cells (right histogram) compared to a negative control cell (left histogram). FITC-conjugated goat-anti-rabbit secondary antibodies were used for the analysis.