

Product datasheet for **TA324373S**

p57 Kip2 (CDKN1C) Rabbit Polyclonal Antibody

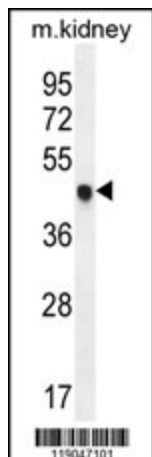
Product data:

Product Type:	Primary Antibodies
Applications:	IF, WB
Recommended Dilution:	IF: 1:10~50, WB: 1:1000
Reactivity:	Human, Mouse
Host:	Rabbit
Isotype:	IgG
Clonality:	Polyclonal
Immunogen:	This CDKN1C antibody is generated from rabbits immunized with a KLH conjugated synthetic peptide between 34-64 amino acids from the N-terminal region of human CDKN1C.
Formulation:	Purified polyclonal antibody supplied in PBS with 0.09% (W/V) sodium azide.
Concentration:	lot specific
Purification:	This antibody is purified through a protein A column, followed by peptide affinity purification.
Conjugation:	Unconjugated
Storage:	Store at -20°C as received.
Stability:	Stable for 12 months from date of receipt.
Predicted Protein Size:	32177 Da
Gene Name:	cyclin-dependent kinase inhibitor 1C
Database Link:	NP_000067 Entrez Gene 12577 Mouse Entrez Gene 1028 Human P49918
Synonyms:	BWCR; BWS; KIP2; p57; p57Kip2; WBS
Protein Families:	Druggable Genome
Protein Pathways:	Cell cycle

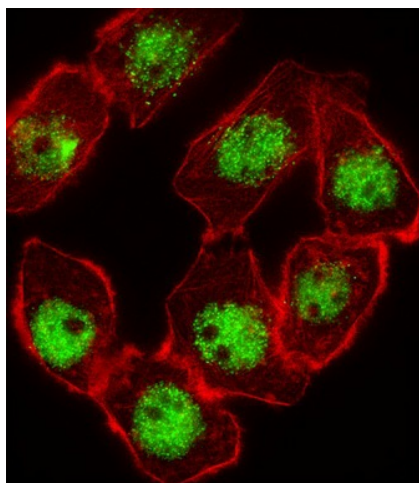


[View online »](#)

Product images:



CDKN1C Antibody (N-term) (Cat. #[TA324373]) western blot analysis in mouse kidney tissue lysates (35ug/lane). This demonstrates the CDKN1C antibody detected the CDKN1C protein (arrow).



IF image of A549 cell stained with CDKN1C Antibody (N-term) (Cat#[TA324373]). A549 cells were incubated with CDKN1C primary antibody (1:25, 1 h at 37°C). For secondary antibody, Alexa Fluor® 488 conjugated donkey anti-rabbit antibody (green) was used (1:400). Cytoplasmic actin was counterstained with Alexa Fluor® 555 (red) conjugated Phalloidin (7 units/ml). CDKN1C immunoreactivity is localized to Nucleus significantly.