

Product datasheet for TA324372S

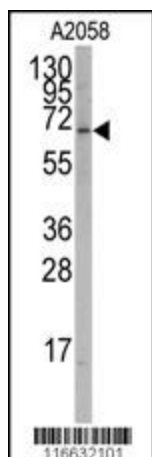
ROR alpha (RORA) Rabbit Polyclonal Antibody

Product data:

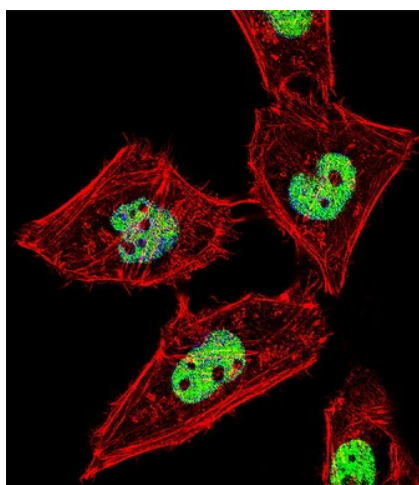
Product Type:	Primary Antibodies
Applications:	IF, WB
Recommended Dilution:	WB: 1:1000, IF: 1:10~50
Reactivity:	Human (Predicted: Mouse)
Host:	Rabbit
Isotype:	IgG
Clonality:	Polyclonal
Immunogen:	This RORA antibody is generated from rabbits immunized with a KLH conjugated synthetic peptide between 193-222 amino acids from human RORA.
Formulation:	Purified polyclonal antibody supplied in PBS with 0.09% (W/V) sodium azide.
Concentration:	lot specific
Purification:	This antibody is purified through a protein A column, followed by peptide affinity purification.
Conjugation:	Unconjugated
Storage:	Store at -20°C as received.
Stability:	Stable for 12 months from date of receipt.
Predicted Protein Size:	63036 Da
Gene Name:	RAR related orphan receptor A
Database Link:	NP_002934 Entrez Gene 19883 Mouse Entrez Gene 6095 Human P35398
Synonyms:	NR1F1; ROR1; ROR2; ROR3; RZR-ALPHA; RZRA
Protein Families:	Druggable Genome, Nuclear Hormone Receptor, Transcription Factors


[View online »](#)

Product images:



Western blot analysis of anti-RORA Antibody (T216) (Cat.#[TA324372]) in A2058 cell line lysates (35ug/lane). RORA (arrow) was detected using the purified Pab.



IF image of HeLa cell stained with RORA Antibody (T216) (Cat#[TA324372]). HeLa cells were incubated with RORA primary antibody (1:25, 1 h at 37°C). For secondary antibody, Alexa Fluor® 488 conjugated donkey anti-rabbit antibody (green) was used (1:400). Cytoplasmic actin was counterstained with Alexa Fluor® 555 (red) conjugated Phalloidin (7 units/ml). Nuclei were counterstained with DAPI (blue). RORA immunoreactivity is localized to Nucleus significantly.