

Product datasheet for **TA324371S**

POU5F1B Rabbit Polyclonal Antibody

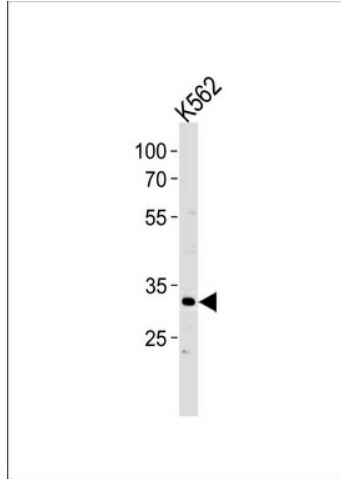
Product data:

Product Type:	Primary Antibodies
Applications:	FC, WB
Recommended Dilution:	WB: 1:1000, FC: 1:10~50
Reactivity:	Human (Predicted: Mouse, Bovine, Pig)
Host:	Rabbit
Isotype:	IgG
Clonality:	Polyclonal
Immunogen:	This P5F1B antibody is generated from rabbits immunized with a KLH conjugated synthetic peptide between 214-242 amino acids from the C-terminal region of human P5F1B.
Formulation:	Purified polyclonal antibody supplied in PBS with 0.09% (W/V) sodium azide.
Concentration:	lot specific
Purification:	This antibody is purified through a protein A column, followed by peptide affinity purification.
Conjugation:	Unconjugated
Storage:	Store at -20°C as received.
Stability:	Stable for 12 months from date of receipt.
Predicted Protein Size:	38588 Da
Gene Name:	POU class 5 homeobox 1B
Database Link:	NP_001153014 Entrez Gene 5462 Human Q06416
Synonyms:	OCT4-PG1; OCT4PG1; OTF3C; OTF3P1; POU5F1P1; POU5F1P4; POU5FLC8; POU5FLC20

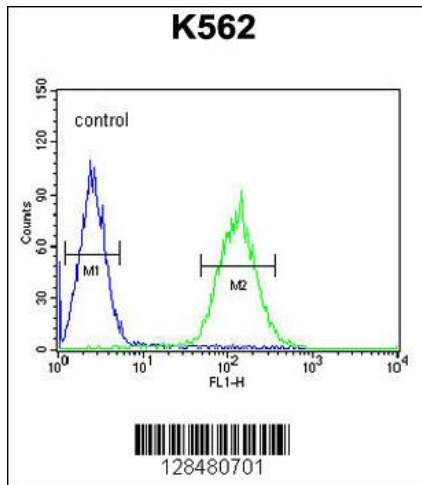


[View online »](#)

Product images:



P5F1B Antibody (C-term) (Cat. #[TA324371]) western blot analysis in K562 cell line lysates (35ug/lane). This demonstrates the P5F1B antibody detected the P5F1B protein (arrow).



P5F1B Antibody (C-term) (Cat. #[TA324371]) flow cytometric analysis of K562 cells (right histogram) compared to a negative control cell (left histogram). FITC-conjugated goat-anti-rabbit secondary antibodies were used for the analysis.