

## Product datasheet for **TA324369S**

### LMO4 Rabbit Polyclonal Antibody

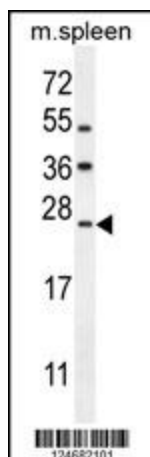
#### Product data:

Product Type:	Primary Antibodies
Applications:	FC, IF, WB
Recommended Dilution:	IF: 1:10~50, WB: 1:1000, FC: 1:10~50
Reactivity:	Human, Mouse (Predicted: Bovine)
Host:	Rabbit
Isotype:	IgG
Clonality:	Polyclonal
Immunogen:	This LMO4 antibody is generated from rabbits immunized with a KLH conjugated synthetic peptide between 104-131 amino acids from the Central region of human LMO4.
Formulation:	Purified polyclonal antibody supplied in PBS with 0.09% (W/V) sodium azide.
Concentration:	lot specific
Purification:	This antibody is purified through a protein A column, followed by peptide affinity purification.
Conjugation:	Unconjugated
Storage:	Store at -20°C as received.
Stability:	Stable for 12 months from date of receipt.
Predicted Protein Size:	17994 Da
Gene Name:	LIM domain only 4
Database Link:	<a href="#">NP_006760</a> <a href="#">Entrez Gene 16911 Mouse</a> <a href="#">Entrez Gene 8543 Human</a> <a href="#">P61968</a>
Synonyms:	LIM domain only 4; OTTHUMP00000011905; OTTHUMP00000011906
Protein Families:	Transcription Factors

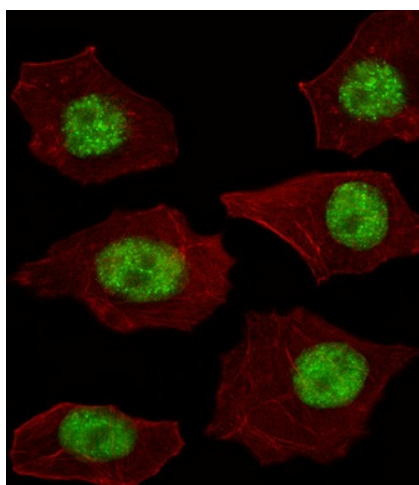


[View online »](#)

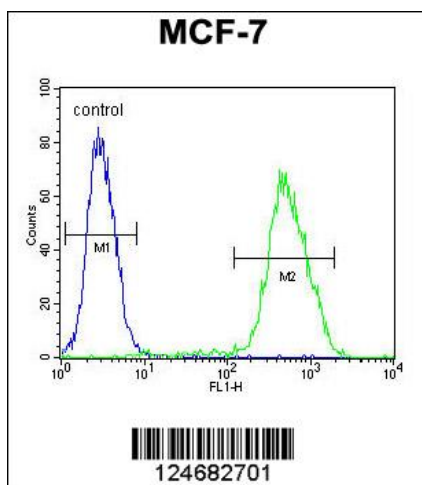
## Product images:



LMO4 Antibody (Center) (Cat. #[TA324369]) western blot analysis in mouse spleen tissue lysates (35ug/lane). This demonstrates the LMO4 antibody detected the LMO4 protein (arrow).



IF image of A549 cell stained with LMO4 Antibody (Center) (Cat#[TA324369]). A549 cells were incubated with LMO4 primary antibody (1:25, 1 h at 37°C). For secondary antibody, Alexa Fluor® 488 conjugated donkey anti-rabbit antibody (green) was used (1:400). Cytoplasmic actin was counterstained with Alexa Fluor® 555 (red) conjugated Phalloidin (7 units/ml). LMO4 immunoreactivity is localized to Nucleus significantly.



LMO4 Antibody (Center) (Cat. #[TA324369]) flow cytometric analysis of MCF-7 cells (right histogram) compared to a negative control cell (left histogram). FITC-conjugated goat-anti-rabbit secondary antibodies were used for the analysis.