

## Product datasheet for **TA324368S**

### ETV5 Rabbit Polyclonal Antibody

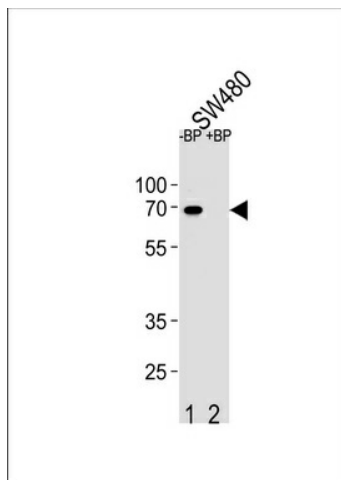
#### Product data:

Product Type:	Primary Antibodies
Applications:	FC, WB
Recommended Dilution:	WB: 1:1000, FC: 1:10~50
Reactivity:	Human
Host:	Rabbit
Isotype:	IgG
Clonality:	Polyclonal
Immunogen:	This ETV5 antibody is generated from rabbits immunized with a KLH conjugated synthetic peptide between 8-36 amino acids from the N-terminal region of human ETV5.
Formulation:	Purified polyclonal antibody supplied in PBS with 0.09% (W/V) sodium azide.
Concentration:	lot specific
Purification:	This antibody is purified through a protein A column, followed by peptide affinity purification.
Conjugation:	Unconjugated
Storage:	Store at -20°C as received.
Stability:	Stable for 12 months from date of receipt.
Predicted Protein Size:	57838 Da
Gene Name:	ETS variant 5
Database Link:	<a href="#">NP_004445</a> <a href="#">Entrez Gene 2119 Human</a> <a href="#">P41161</a>
Synonyms:	ERM
Protein Families:	Transcription Factors

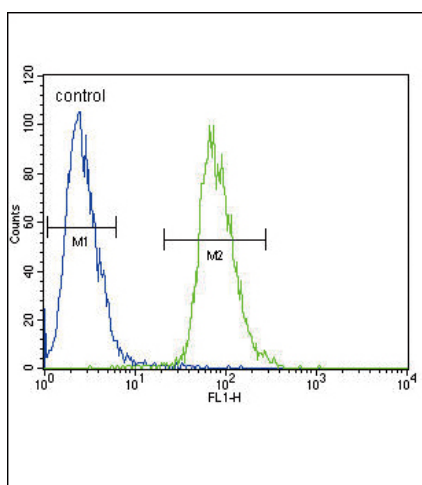


[View online »](#)

## Product images:



Western blot analysis of ETV5 Antibody (N-term) Pab (Cat. #TA324368) pre-incubated without (lane 1) and with (lane 2) blocking peptide in SW480 cell line lysate. ETV5 Antibody (N-term) (arrow) was detected using the purified Pab.



ETV5 Antibody (N-term) (Cat. #TA324368) flow cytometric analysis of 293 cells (right histogram) compared to a negative control cell (left histogram). FITC-conjugated goat-anti-rabbit secondary antibodies were used for the analysis.