

Product datasheet for **TA324367S**

Folate Binding Protein (FOLR1) Rabbit Polyclonal Antibody

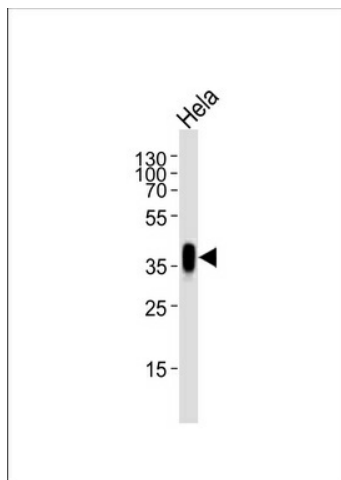
Product data:

| | |
|-------------------------|--|
| Product Type: | Primary Antibodies |
| Applications: | FC, IHC, WB |
| Recommended Dilution: | WB: 1:1000, IHC: 1:10~50, FC: 1:10~50 |
| Reactivity: | Human |
| Host: | Rabbit |
| Isotype: | IgG |
| Clonality: | Polyclonal |
| Immunogen: | This FOLR1 antibody is generated from rabbits immunized with a KLH conjugated synthetic peptide between 33-68 amino acids from the N-terminal region of human FOLR1. |
| Formulation: | Purified polyclonal antibody supplied in PBS with 0.09% (W/V) sodium azide. |
| Concentration: | lot specific |
| Purification: | This antibody is purified through a protein A column, followed by peptide affinity purification. |
| Conjugation: | Unconjugated |
| Storage: | Store at -20°C as received. |
| Stability: | Stable for 12 months from date of receipt. |
| Predicted Protein Size: | 29819 Da |
| Gene Name: | folate receptor 1 (adult) |
| Database Link: | NP_000793 Entrez Gene 2348 Human P15328 |
| Synonyms: | FBP; FOLR |
| Protein Families: | Druggable Genome, Secreted Protein, Transmembrane |

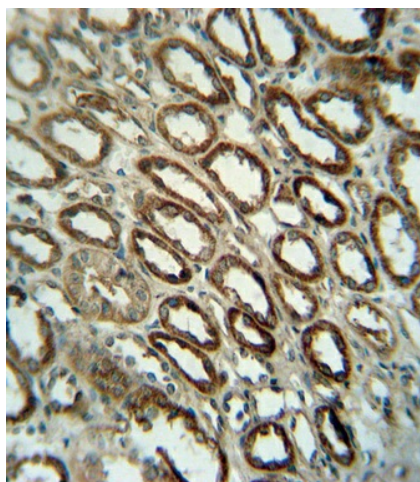


[View online »](#)

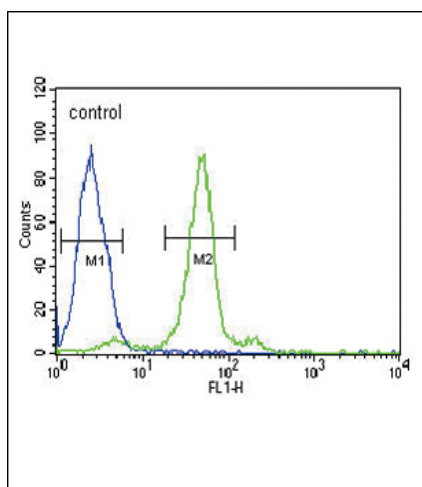
Product images:



Western blot analysis of lysate from HeLa cell line, using FOLR1 Antibody (N-term) (Cat. # [TA324367]). [TA324367] was diluted at 1:1000. A goat anti-rabbit IgG H&L (HRP) at 1:5000 dilution was used as the secondary antibody. Lysate at 35ug.



FOLR1 antibody (N-term) (Cat. # [TA324367]) immunohistochemistry analysis in formalin fixed and paraffin embedded human kidney tissue followed by peroxidase conjugation of the secondary antibody and DAB staining. This data demonstrates the use of the FOLR1 antibody (N-term) for immunohistochemistry. Clinical relevance has not been evaluated.



FOLR1 Antibody (N-term) (Cat. #[TA324367]) flow cytometric analysis of HeLa cells (right histogram) compared to a negative control cell (left histogram). FITC-conjugated goat-anti-rabbit secondary antibodies were used for the analysis.