

Product datasheet for **TA324366S**

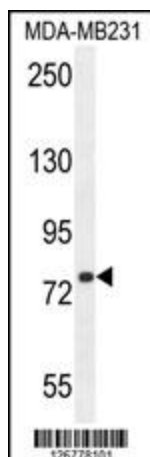
SORBS1 Rabbit Polyclonal Antibody

Product data:

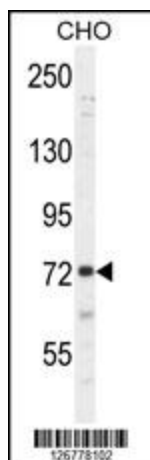
Product Type:	Primary Antibodies
Applications:	IF, WB
Recommended Dilution:	WB: 1:1000, IF: 1:10~50
Reactivity:	Human, Hamster (Predicted: Mouse)
Host:	Rabbit
Isotype:	IgG
Clonality:	Polyclonal
Immunogen:	This SORBS1 antibody is generated from rabbits immunized with a KLH conjugated synthetic peptide between 866-892 amino acids from the Central region of human SORBS1.
Formulation:	Purified polyclonal antibody supplied in PBS with 0.09% (W/V) sodium azide.
Concentration:	lot specific
Purification:	This antibody is purified through a protein A column, followed by peptide affinity purification.
Conjugation:	Unconjugated
Storage:	Store at -20°C as received.
Stability:	Stable for 12 months from date of receipt.
Predicted Protein Size:	142513 Da
Gene Name:	sorbin and SH3 domain containing 1
Database Link:	NP_079267 Entrez Gene 20411 Mouse Entrez Gene 10580 Human Q9BX66
Synonyms:	CAP; FLAF2; R85FL; SH3D5; SH3P12; SORB1
Protein Families:	Druggable Genome
Protein Pathways:	Adherens junction, Insulin signaling pathway, PPAR signaling pathway



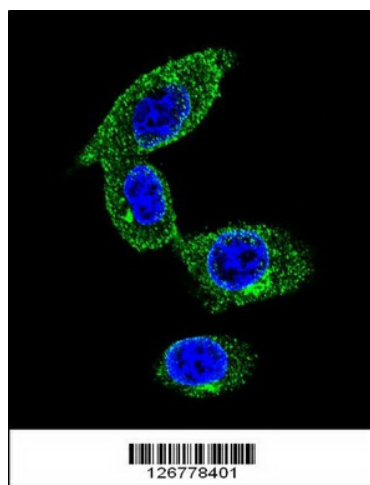
[View online »](#)

Product images:


SORBS1 Antibody (Center) (Cat. #TA324366]) western blot analysis in MDA-MB231 cell line lysates (35ug/lane). This demonstrates the SORBS1 antibody detected the SORBS1 protein (arrow).



SORBS1 Antibody (Center) (Cat. #TA324366]) western blot analysis in CHO cell line lysates (35ug/lane). This demonstrates the SORBS1 antibody detected the SORBS1 protein (arrow).



Confocal immunofluorescent analysis of SORBS1 Antibody (Center) (Cat#[TA324366]) with MDA-MB231 cell followed by Alexa Fluor 488-conjugated goat anti-rabbit IgG (green). DAPI was used to stain the cell nuclear (blue).