

Product datasheet for **TA324365**

PPP1R3A Rabbit Polyclonal Antibody

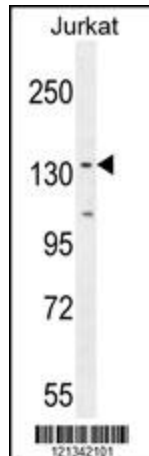
Product data:

Product Type:	Primary Antibodies
Applications:	FC, WB
Recommended Dilution:	WB: 1:1000, FC: 1:10~50
Reactivity:	Human (Predicted: Rabbit)
Host:	Rabbit
Isotype:	IgG
Clonality:	Polyclonal
Immunogen:	This PPP1R3A antibody is generated from rabbits immunized with a KLH conjugated synthetic peptide between 754-782 amino acids from the Central region of human PPP1R3A.
Formulation:	Purified polyclonal antibody supplied in PBS with 0.09% (W/V) sodium azide.
Concentration:	lot specific
Purification:	This antibody is purified through a protein A column, followed by peptide affinity purification.
Conjugation:	Unconjugated
Storage:	Store at -20°C as received.
Stability:	Stable for 12 months from date of receipt.
Predicted Protein Size:	125767 Da
Gene Name:	protein phosphatase 1 regulatory subunit 3A
Database Link:	NP_002702 Entrez Gene 5506 Human Q16821
Synonyms:	GM; PP1G; PPP1R3
Protein Families:	Druggable Genome, Phosphatase, Transmembrane
Protein Pathways:	Insulin signaling pathway

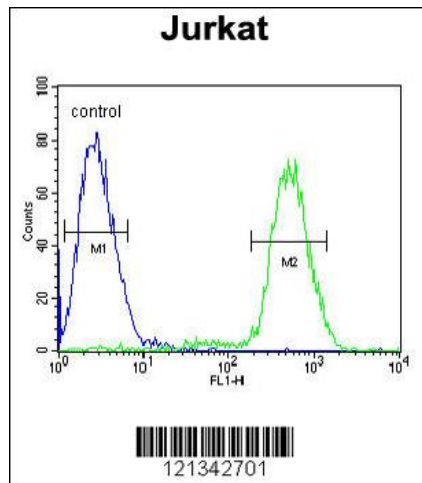


[View online »](#)

Product images:



PPP1R3A Antibody (Center) (Cat. #TA324365) western blot analysis in Jurkat cell line lysates (35ug/lane). This demonstrates the PPP1R3A antibody detected the PPP1R3A protein (arrow).



PPP1R3A Antibody (Center) (Cat. #TA324365) flow cytometric analysis of Jurkat cells (right histogram) compared to a negative control cell (left histogram). FITC-conjugated goat-anti-rabbit secondary antibodies were used for the analysis.