

## Product datasheet for **TA324364S**

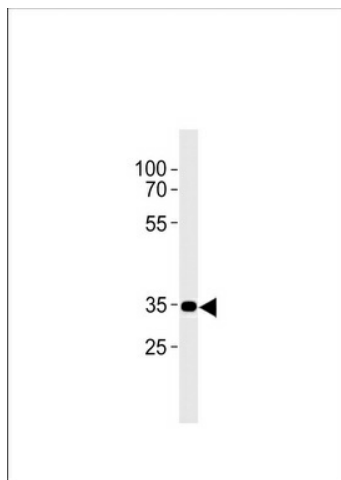
### Cannabinoid Receptor II (CNR2) Rabbit Polyclonal Antibody

#### Product data:

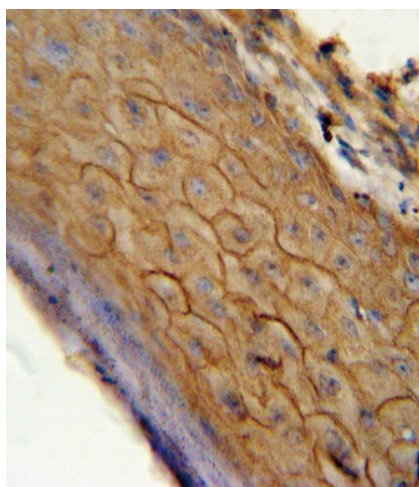
Product Type:	Primary Antibodies
Applications:	FC, IHC, WB
Recommended Dilution:	WB: 1:1000, IHC: 1:10~50, FC: 1:10~50
Reactivity:	Human
Host:	Rabbit
Isotype:	IgG
Clonality:	Polyclonal
Immunogen:	This CB2 antibody is generated from rabbits immunized with a KLH conjugated synthetic peptide between 329-356 amino acids from the C-terminal region of human CB2.
Formulation:	Purified polyclonal antibody supplied in PBS with 0.09% (W/V) sodium azide.
Concentration:	lot specific
Purification:	This antibody is purified through a protein A column, followed by peptide affinity purification.
Conjugation:	Unconjugated
Storage:	Store at -20°C as received.
Stability:	Stable for 12 months from date of receipt.
Predicted Protein Size:	39681 Da
Gene Name:	cannabinoid receptor 2
Database Link:	<a href="#">NP_001832</a> <a href="#">Entrez Gene 1269 Human</a> <a href="#">P34972</a>
Synonyms:	CB-2; CB2; CX5
Protein Families:	Druggable Genome, GPCR, Transmembrane
Protein Pathways:	Neuroactive ligand-receptor interaction



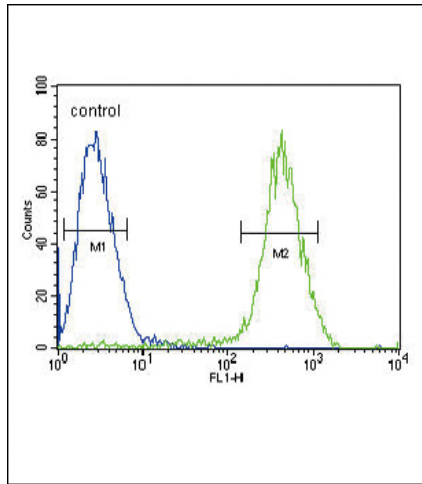
[View online »](#)

**Product images:**

CB2 Antibody (C-term) (Cat. #[TA324364])  
western blot analysis in A431 cell line lysates  
(35ug/lane). This demonstrates the CB2 antibody  
detected the CB2 protein (arrow).



CB2 antibody (C-term) (Cat. #[TA324364])  
immunohistochemistry analysis in formalin fixed  
and paraffin embedded human skin carcinoma  
followed by peroxidase conjugation of the  
secondary antibody and DAB staining. This data  
demonstrates the use of the CB2 antibody (C-  
term) for immunohistochemistry. Clinical  
relevance has not been evaluated.



CB2 Antibody (C-term) (Cat. #[TA324364]) flow cytometric analysis of Jurkat cells (right histogram) compared to a negative control cell (left histogram). FITC-conjugated goat-anti-rabbit secondary antibodies were used for the analysis.