

Product datasheet for **TA324363S**

SREBP2 (SREBF2) Rabbit Polyclonal Antibody

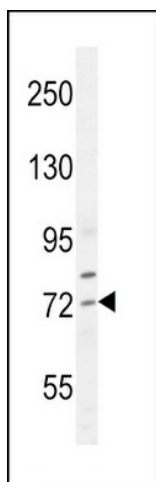
Product data:

Product Type:	Primary Antibodies
Applications:	IF, IHC, WB
Recommended Dilution:	IF: 1:10~50, WB: 1:1000, IHC: 1:10~50
Reactivity:	Human
Host:	Rabbit
Isotype:	IgG
Clonality:	Polyclonal
Immunogen:	This SREBF2 antibody is generated from rabbits immunized with a KLH conjugated synthetic peptide between 399-427 amino acids from the Central region of human SREBF2.
Formulation:	Purified polyclonal antibody supplied in PBS with 0.09% (W/V) sodium azide.
Concentration:	lot specific
Purification:	This antibody is purified through a protein A column, followed by peptide affinity purification.
Conjugation:	Unconjugated
Storage:	Store at -20°C as received.
Stability:	Stable for 12 months from date of receipt.
Predicted Protein Size:	123688 Da
Gene Name:	sterol regulatory element binding transcription factor 2
Database Link:	NP_004590 Entrez Gene 6721 Human Q12772
Synonyms:	bHLHd2; SREBP-2; SREBP2
Protein Families:	Druggable Genome, Transcription Factors

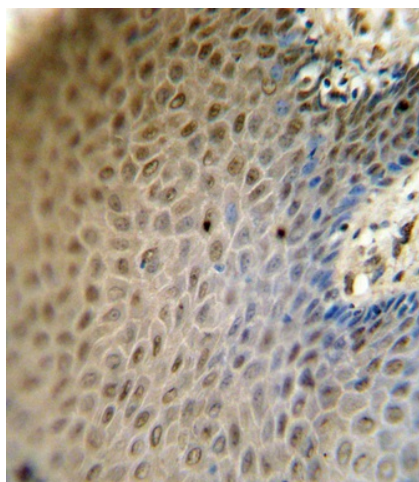


[View online »](#)

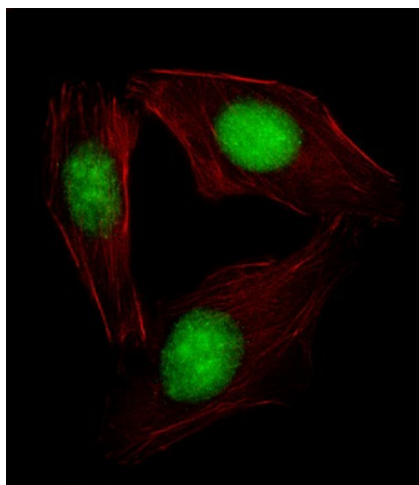
Product images:



SREBF2 Antibody (Center) (Cat. #[TA324363]) western blot analysis in HepG2 cell line lysates (35ug/lane). This demonstrates the SREBF2 antibody detected the SREBF2 protein (arrow).



SREBF2 antibody (Center) (Cat. #[TA324363]) immunohistochemistry analysis in formalin fixed and paraffin embedded human skin carcinoma followed by peroxidase conjugation of the secondary antibody and DAB staining. This data demonstrates the use of the SREBF2 antibody (Center) for immunohistochemistry. Clinical relevance has not been evaluated.



IF image of U251 cell stained with SREBF2 Antibody (Center) (Cat#[TA324363]). U251 cells were incubated with SREBF2 primary antibody (1:25, 1 h at 37°C). For secondary antibody, Alexa Fluor® 488 conjugated donkey anti-rabbit antibody (green) was used (1:400). Cytoplasmic actin was counterstained with Alexa Fluor® 555 (red) conjugated Phalloidin (7 units/ml). SREBF2 immunoreactivity is localized to Nucleus and Nucleolus significantly.