

Product datasheet for **TA324362S**

BCKDHB Rabbit Polyclonal Antibody

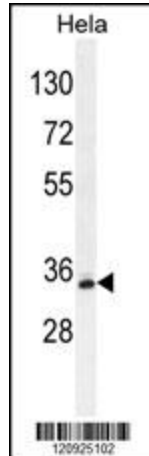
Product data:

Product Type:	Primary Antibodies
Applications:	FC, IF, IHC, WB
Recommended Dilution:	WB: 1:1000, IHC: 1:50~100, FC: 1:10~50, IF: 1:10~50
Reactivity:	Human
Host:	Rabbit
Isotype:	IgG
Clonality:	Polyclonal
Immunogen:	This BCKDHB antibody is generated from rabbits immunized with a KLH conjugated synthetic peptide between 41-70 amino acids from the N-terminal region of human BCKDHB.
Formulation:	Purified polyclonal antibody supplied in PBS with 0.09% (W/V) sodium azide.
Concentration:	lot specific
Purification:	This antibody is purified through a protein A column, followed by peptide affinity purification.
Conjugation:	Unconjugated
Storage:	Store at -20°C as received.
Stability:	Stable for 12 months from date of receipt.
Predicted Protein Size:	43122 Da
Gene Name:	branched chain keto acid dehydrogenase E1, beta polypeptide
Database Link:	NP_000047 Entrez Gene 594 Human P21953
Synonyms:	BCKDE1B; BCKDH E1-beta; E1B
Protein Pathways:	Metabolic pathways, Valine, leucine and isoleucine degradation

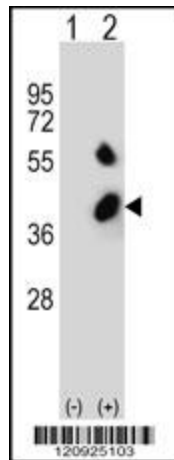


[View online »](#)

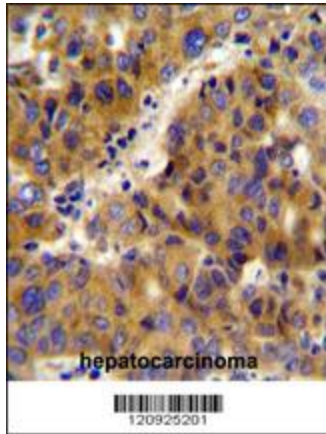
Product images:



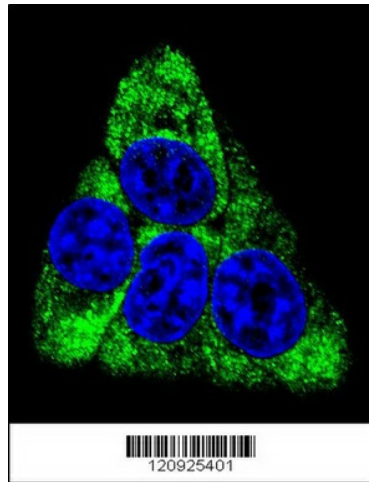
BCKDHB Antibody (N-term) (Cat. #[TA324362]) western blot analysis in HeLa cell line lysates (35ug/lane). This demonstrates the BCKDHB antibody detected the BCKDHB protein (arrow).



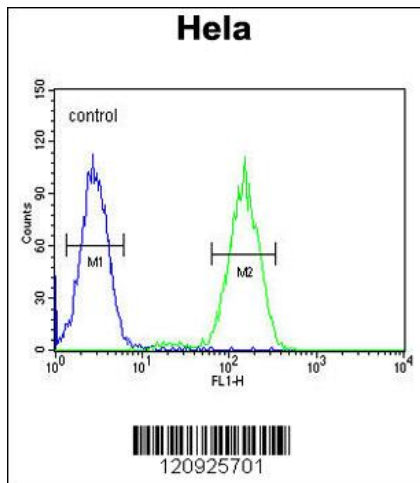
Western blot analysis of BCKDHB (arrow) using rabbit polyclonal BCKDHB Antibody (N-term) (Cat. #[TA324362]). 293 cell lysates (2 ug/lane) either nontransfected (Lane 1) or transiently transfected (Lane 2) with the BCKDHB gene.



BCKDHB Antibody (N-term) (Cat. #[TA324362]) immunohistochemistry analysis in formalin fixed and paraffin embedded human hepatocarcinoma followed by peroxidase conjugation of the secondary antibody and DAB staining. This data demonstrates the use of the BCKDHB Antibody (N-term) for immunohistochemistry. Clinical relevance has not been evaluated.



Confocal immunofluorescent analysis of BCKDHB Antibody (N-term) (Cat#[TA324362]) with HeLa cell followed by Alexa Fluor 488-conjugated goat anti-rabbit IgG (green). DAPI was used to stain the cell nuclear (blue).



BCKDHB Antibody (N-term) (Cat. #[TA324362]) flow cytometric analysis of HeLa cells (right histogram) compared to a negative control cell (left histogram). FITC-conjugated goat-anti-rabbit secondary antibodies were used for the analysis.