

## Product datasheet for **TA324361**

### mtTFA (TFAM) Rabbit Polyclonal Antibody

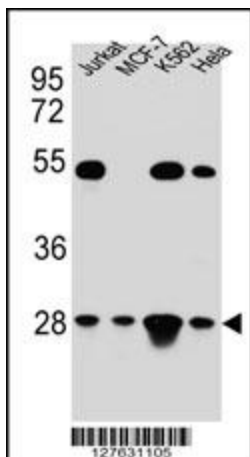
#### Product data:

Product Type:	Primary Antibodies
Applications:	FC, IF, IHC, WB
Recommended Dilution:	WB: 1:1000, IHC: 1:50~100, FC: 1:10~50, IF: 1:10~50
Reactivity:	Human
Host:	Rabbit
Isotype:	IgG
Clonality:	Polyclonal
Immunogen:	This TFAM antibody is generated from rabbits immunized with a KLH conjugated synthetic peptide between 216-246 amino acids from the C-terminal region of human TFAM.
Formulation:	Purified polyclonal antibody supplied in PBS with 0.09% (W/V) sodium azide.
Concentration:	lot specific
Purification:	This antibody is purified through a protein A column, followed by peptide affinity purification.
Conjugation:	Unconjugated
Storage:	Store at -20°C as received.
Stability:	Stable for 12 months from date of receipt.
Predicted Protein Size:	29097 Da
Gene Name:	transcription factor A, mitochondrial
Database Link:	<a href="#">NP_036383</a> <a href="#">Entrez Gene 7019 Human</a> <a href="#">Q00059</a>
Synonyms:	mitochondrial; mitochondrial transcription factor A; MtTF1; mtTFA; OTTHUMP00000019633; TCF6; TCF6L1; TCF6L2; TCF6L3; Transcription factor 6-like 2 (mitochondrial transcription factor); transcription factor A
Protein Families:	Druggable Genome, Transcription Factors
Protein Pathways:	Huntington's disease

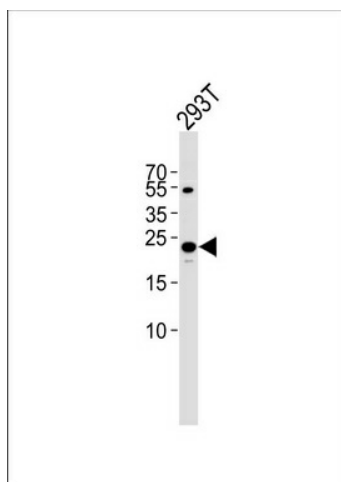


[View online »](#)

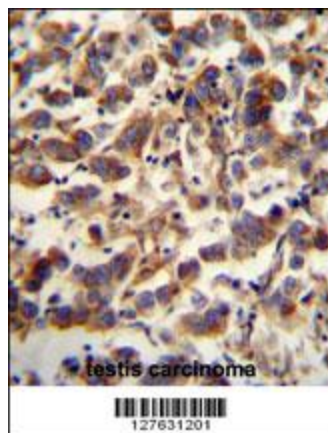
Product images:



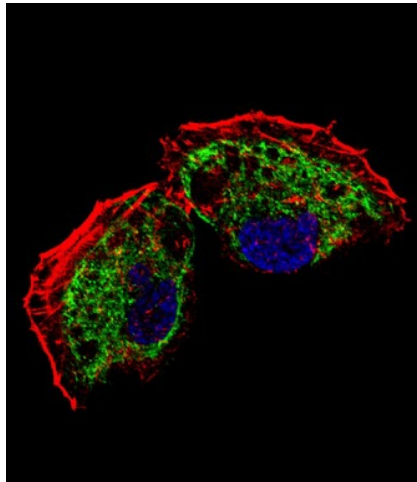
TFAM Antibody (C-term) (Cat. #TA324361) western blot analysis in HeLa, Jurkat, K562, MCF-7 cell line lysates (35ug/lane). This demonstrates the TFAM antibody detected the TFAM protein (arrow).



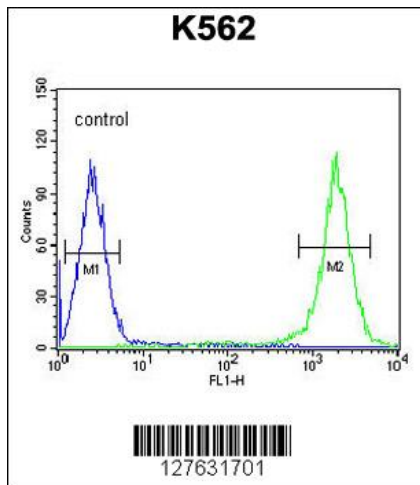
Western blot analysis of lysate from 293T cell line, using TFAM Antibody (C-term) (Cat. #TA324361). TA324361 was diluted at 1:1000. A goat anti-rabbit IgG H&L (HRP) at 1:5000 dilution was used as the secondary antibody. Lysate at 35ug.



TFAM antibody (C-term) (Cat. #TA324361) immunohistochemistry analysis in formalin fixed and paraffin embedded human testis carcinoma followed by peroxidase conjugation of the secondary antibody and DAB staining. This data demonstrates the use of the TFAM antibody (C-term) for immunohistochemistry. Clinical relevance has not been evaluated.



IF image of NCI-H460 cell stained with TFAM Antibody (C-term) (Cat#TA324361). NCI-H460 cells were incubated with TFAM primary antibody (1:25, 1 h at 37°C). For secondary antibody, Alexa Fluor® 488 conjugated donkey anti-rabbit antibody (green) was used (1:400). Cytoplasmic actin was counterstained with Alexa Fluor® 555 (red) conjugated Phalloidin (7 units/ml). Nuclei were counterstained with DAPI (blue). TFAM immunoreactivity is localized to mitochondrion significantly.



TFAM Antibody (C-term) (Cat. #TA324361) flow cytometric analysis of K562 cells (right histogram) compared to a negative control cell (left histogram). FITC-conjugated goat-anti-rabbit secondary antibodies were used for the analysis.