

## Product datasheet for **TA324359S**

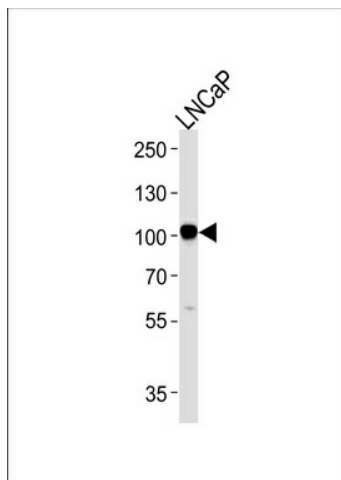
### CD10 (MME) Rabbit Polyclonal Antibody

#### Product data:

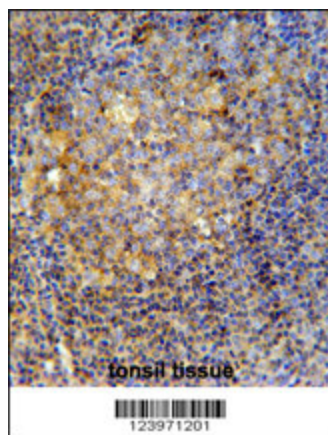
Product Type:	Primary Antibodies
Applications:	IHC, WB
Recommended Dilution:	WB: 1:1000, IHC: 1:50~100
Reactivity:	Human, Mouse
Host:	Rabbit
Isotype:	IgG
Clonality:	Polyclonal
Immunogen:	This MME antibody is generated from rabbits immunized with a KLH conjugated synthetic peptide between 721-747 amino acids from the C-terminal region of human MME.
Formulation:	Purified polyclonal antibody supplied in PBS with 0.09% (W/V) sodium azide.
Concentration:	lot specific
Purification:	This antibody is purified through a protein A column, followed by peptide affinity purification.
Conjugation:	Unconjugated
Storage:	Store at -20°C as received.
Stability:	Stable for 12 months from date of receipt.
Predicted Protein Size:	85514 Da
Gene Name:	membrane metallo-endopeptidase
Database Link:	<a href="#">NP_000893</a> <a href="#">Entrez Gene 17380 Mouse</a> <a href="#">Entrez Gene 4311 Human</a> <a href="#">P08473</a>
Synonyms:	CALLA; CD10; CMT2T; NEP; SCA43; SFE
Protein Families:	Druggable Genome, Protease, Transmembrane
Protein Pathways:	Alzheimer's disease, Hematopoietic cell lineage, Renin-angiotensin system


[View online »](#)

## Product images:



MME Antibody (C-term) (Cat.# [TA324359])  
western blot analysis in LNCaP cell line lysates  
(35ug/lane). This demonstrates the MME antibody  
detected the MME protein (arrow).



MME Antibody (C-term) (Cat. # [TA324359])  
immunohistochemistry analysis in formalin fixed  
and paraffin embedded human tonsil tissue  
followed by peroxidase conjugation of the  
secondary antibody and DAB staining. This data  
demonstrates the use of the MME Antibody (C-  
term) for immunohistochemistry. Clinical  
relevance has not been evaluated.