

Product datasheet for **TA324359**

CD10 (MME) Rabbit Polyclonal Antibody

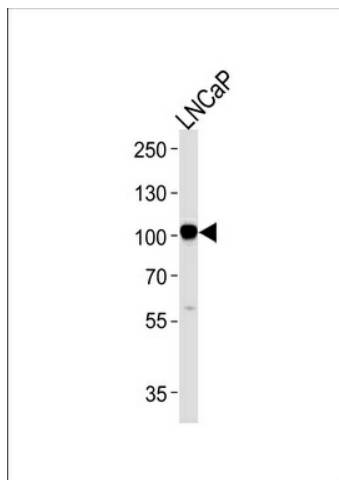
Product data:

Product Type:	Primary Antibodies
Applications:	IHC, WB
Recommended Dilution:	WB: 1:1000, IHC: 1:50~100
Reactivity:	Human, Mouse
Host:	Rabbit
Isotype:	IgG
Clonality:	Polyclonal
Immunogen:	This MME antibody is generated from rabbits immunized with a KLH conjugated synthetic peptide between 721-747 amino acids from the C-terminal region of human MME.
Formulation:	Purified polyclonal antibody supplied in PBS with 0.09% (W/V) sodium azide.
Concentration:	lot specific
Purification:	This antibody is purified through a protein A column, followed by peptide affinity purification.
Conjugation:	Unconjugated
Storage:	Store at -20°C as received.
Stability:	Stable for 12 months from date of receipt.
Predicted Protein Size:	85514 Da
Gene Name:	membrane metallo-endopeptidase
Database Link:	NP_000893 Entrez Gene 17380 Mouse Entrez Gene 4311 Human P08473
Synonyms:	CALLA; CD10; CMT2T; NEP; SCA43; SFE
Protein Families:	Druggable Genome, Protease, Transmembrane
Protein Pathways:	Alzheimer's disease, Hematopoietic cell lineage, Renin-angiotensin system

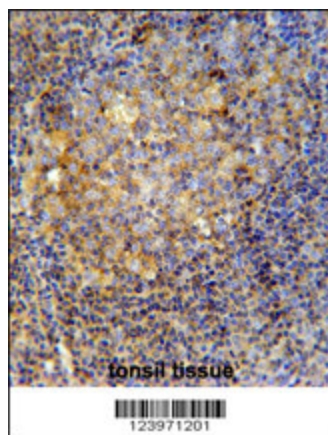


[View online »](#)

Product images:



MME Antibody (C-term) (Cat.# TA324359) western blot analysis in LNCaP cell line lysates (35ug/lane). This demonstrates the MME antibody detected the MME protein (arrow).



MME Antibody (C-term) (Cat. #TA324359) immunohistochemistry analysis in formalin fixed and paraffin embedded human tonsil tissue followed by peroxidase conjugation of the secondary antibody and DAB staining. This data demonstrates the use of the MME Antibody (C-term) for immunohistochemistry. Clinical relevance has not been evaluated.