

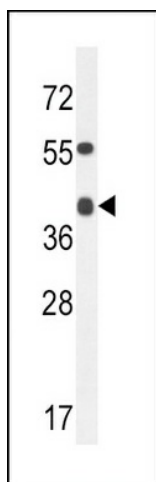
Product datasheet for **TA324357S**

ADH4 Rabbit Polyclonal Antibody

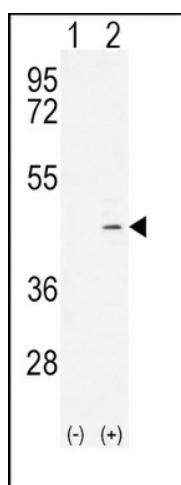
Product data:

Product Type:	Primary Antibodies
Applications:	FC, IHC, WB
Recommended Dilution:	WB: 1:1000, IHC: 1:10~50, FC: 1:10~50
Reactivity:	Human, Mouse
Host:	Rabbit
Isotype:	IgG
Clonality:	Polyclonal
Immunogen:	This ADH4 antibody is generated from rabbits immunized with a KLH conjugated synthetic peptide between 319-348 amino acids from the C-terminal region of human ADH4.
Formulation:	Purified polyclonal antibody supplied in PBS with 0.09% (W/V) sodium azide.
Concentration:	lot specific
Purification:	This antibody is purified through a protein A column, followed by peptide affinity purification.
Conjugation:	Unconjugated
Storage:	Store at -20°C as received.
Stability:	Stable for 12 months from date of receipt.
Predicted Protein Size:	40222 Da
Gene Name:	alcohol dehydrogenase 4 (class II), pi polypeptide
Database Link:	NP_000661 Entrez Gene 26876 Mouse Entrez Gene 127 Human P08319
Synonyms:	ADH-2; HEL-S-4
Protein Families:	Druggable Genome
Protein Pathways:	Drug metabolism - cytochrome P450, Fatty acid metabolism, Glycolysis / Gluconeogenesis, Metabolic pathways, Metabolism of xenobiotics by cytochrome P450, Retinol metabolism, Tyrosine metabolism

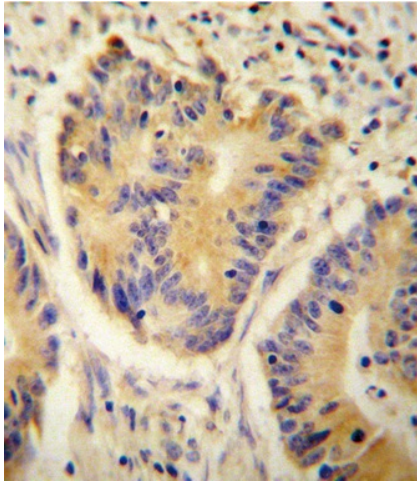

[View online »](#)

Product images:


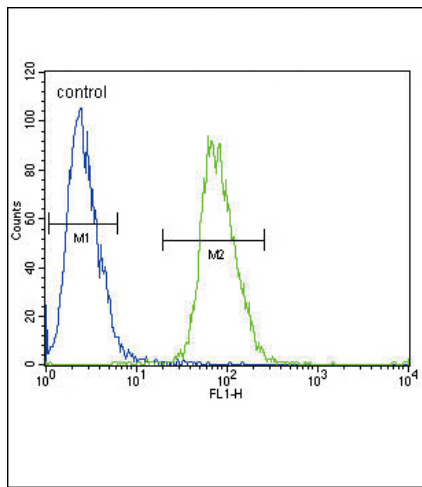
ADH4 Antibody (C-term) (Cat. # [TA324357]) western blot analysis in mouse heart tissue lysates (35ug/lane). This demonstrates the ADH4 antibody detected the ADH4 protein (arrow).



Western blot analysis of ADH4 (arrow) using rabbit polyclonal ADH4 Antibody (C-term) (Cat. # [TA324357]). 293 cell lysates (2 ug/lane) either nontransfected (Lane 1) or transiently transfected (Lane 2) with the ADH4 gene.



ADH4 antibody (C-term) (Cat. #[TA324357]) immunohistochemistry analysis in formalin fixed and paraffin embedded human colon carcinoma followed by peroxidase conjugation of the secondary antibody and DAB staining. This data demonstrates the use of the ADH4 antibody (C-term) for immunohistochemistry. Clinical relevance has not been evaluated.



ADH4 Antibody (C-term) (Cat. #[TA324357]) flow cytometric analysis of 293 cells (right histogram) compared to a negative control cell (left histogram). FITC-conjugated goat-anti-rabbit secondary antibodies were used for the analysis.