

## Product datasheet for **TA324356S**

### Apolipoprotein F (APOF) Rabbit Polyclonal Antibody

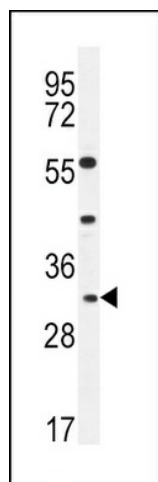
#### Product data:

Product Type:	Primary Antibodies
Applications:	IHC, WB
Recommended Dilution:	WB: 1:1000, IHC: 1:10~50
Reactivity:	Human
Host:	Rabbit
Isotype:	IgG
Clonality:	Polyclonal
Immunogen:	This APOF antibody is generated from rabbits immunized with a KLH conjugated synthetic peptide between 111-138 amino acids from the Central region of human APOF.
Formulation:	Purified polyclonal antibody supplied in PBS with 0.09% (W/V) sodium azide.
Concentration:	lot specific
Purification:	This antibody is purified through a protein A column, followed by peptide affinity purification.
Conjugation:	Unconjugated
Storage:	Store at -20°C as received.
Stability:	Stable for 12 months from date of receipt.
Predicted Protein Size:	35399 Da
Gene Name:	apolipoprotein F
Database Link:	<a href="#">NP_001629</a> <a href="#">Entrez Gene 319 Human</a> <a href="#">Q13790</a>
Synonyms:	Apo-F; LTIP
Protein Families:	Druggable Genome, Secreted Protein

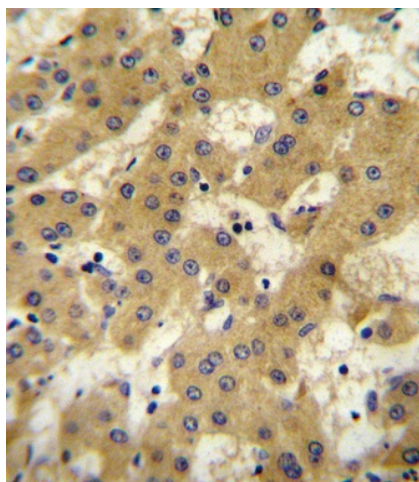


[View online »](#)

## Product images:



APOF Antibody (Center) (Cat. #TA324356])  
western blot analysis in CEM cell line lysates  
(35ug/lane). This demonstrates the APOF antibody  
detected the APOF protein (arrow).



APOF antibody (Center) (Cat. #TA324356])  
immunohistochemistry analysis in formalin fixed  
and paraffin embedded human hepatocarcinoma  
followed by peroxidase conjugation of the  
secondary antibody and DAB staining. This data  
demonstrates the use of the APOF antibody  
(Center) for immunohistochemistry. Clinical  
relevance has not been evaluated.