

Product datasheet for **TA324349S**

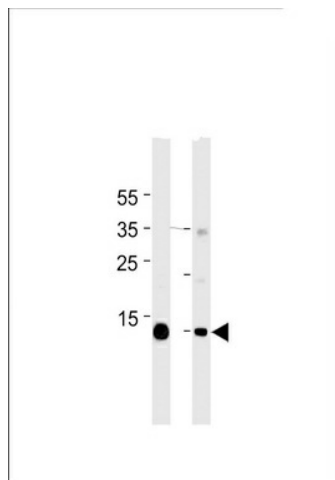
Myoglobin (MB) Mouse Monoclonal Antibody [Clone ID: 444CT19.2.1]

Product data:

Product Type:	Primary Antibodies
Clone Name:	444CT19.2.1
Applications:	WB
Recommended Dilution:	WB: 1:1000
Reactivity:	Human, Mouse (Predicted: Pig, Monkey)
Host:	Mouse
Isotype:	IgG1
Clonality:	Monoclonal
Immunogen:	This Myoglobin antibody is generated from mice immunized with a KLH conjugated synthetic peptide between 103-130 amino acids from human Myoglobin.
Formulation:	Purified monoclonal antibody supplied in PBS with 0.09% (W/V) sodium azide.
Concentration:	lot specific
Purification:	This antibody is purified through a protein G column, followed by dialysis against PBS.
Conjugation:	Unconjugated
Storage:	Store at -20°C as received.
Stability:	Stable for 12 months from date of receipt.
Predicted Protein Size:	17184 Da
Gene Name:	myoglobin
Database Link:	NP_005359 Entrez Gene 17189 Mouse Entrez Gene 693269 Monkey Entrez Gene 4151 Human P02144
Synonyms:	myoglobin; PVALB



[View online »](#)

Product images:

Myoglobin Antibody (Cat. #[TA324349]) western blot analysis in mouse heart and skeletal muscle tissue lysates (35ug/lane). This demonstrates the Myoglobin antibody detected the Myoglobin protein (arrow).