

## Product datasheet for **TA324348**

### Alkaline Phosphatase (ALPP) Mouse Monoclonal Antibody [Clone ID: 421CT8.1.1]

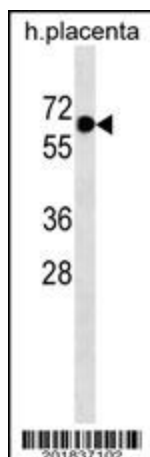
#### Product data:

Product Type:	Primary Antibodies
Clone Name:	421CT8.1.1
Applications:	IF, WB
Recommended Dilution:	IF: 1:100, WB: 1:500~3200
Reactivity:	Human
Host:	Mouse
Isotype:	IgG1
Clonality:	Monoclonal
Immunogen:	This ALPP antibody is generated from mice immunized with a KLH conjugated synthetic peptide between 56-83 amino acids from the N-terminal region of human ALPP.
Formulation:	Mouse monoclonal antibody supplied in crude ascites with 0.09% (W/V) sodium azide.
Concentration:	lot specific
Conjugation:	Unconjugated
Storage:	Store at -20°C as received.
Stability:	Stable for 12 months from date of receipt.
Predicted Protein Size:	57954 Da
Gene Name:	alkaline phosphatase, placental
Database Link:	<a href="#">NP_001623</a> <a href="#">Entrez Gene 250 Human</a> <a href="#">P05187</a>
Synonyms:	ALP; PALP; PLAP; PLAP-1
Protein Pathways:	Folate biosynthesis, Metabolic pathways

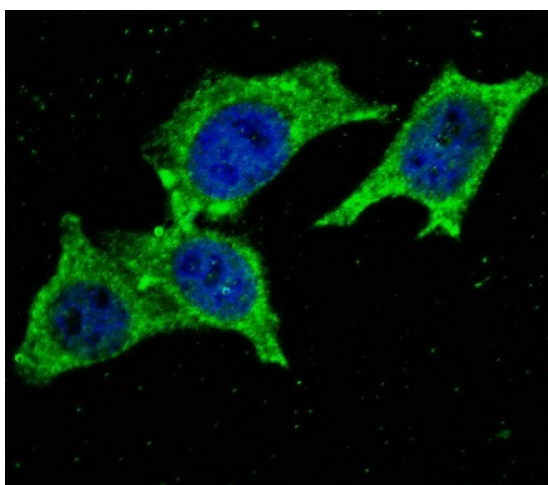


[View online »](#)

## Product images:



ALPP Antibody (N-term) (Cat. #TA324348) western blot analysis in mouse placenta tissue lysates (35ug/lane). This demonstrates the ALPP antibody detected the ALPP protein (arrow).



IF image of HeLa cells stained with ALPP (N-term) antibody. HeLa cells were incubated with TA324348 ALPP (N-term) primary antibody (1:100, 2 h at RT). For secondary antibody, Alexa Fluor® 488 conjugated donkey anti-mouse antibody (green) was used (1:1000, 1h). Nuclei were counterstained with Hoechst 33342 (blue). ALPP immunoreactivity is localized to the cytoplasm of HeLa cells.