

Product datasheet for **TA324347**

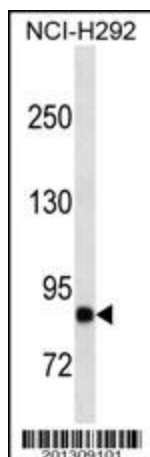
bcl 6 (BCL6) Mouse Monoclonal Antibody [Clone ID: 305CT16.3.3]

Product data:

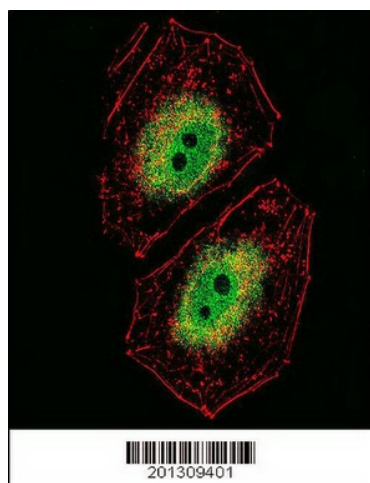
Product Type:	Primary Antibodies
Clone Name:	305CT16.3.3
Applications:	IF, WB
Recommended Dilution:	WB: 1:1000~16000, IF: 1:10~50
Reactivity:	Human
Host:	Mouse
Isotype:	IgG1
Clonality:	Monoclonal
Immunogen:	This BCL6 antibody is generated from mice immunized with a KLH conjugated synthetic peptide between 676-704 amino acids from the C-terminal region of human BCL6.
Formulation:	Mouse monoclonal antibody supplied in crude ascites with 0.09% (W/V) sodium azide.
Concentration:	lot specific
Conjugation:	Unconjugated
Storage:	Store at -20°C as received.
Stability:	Stable for 12 months from date of receipt.
Predicted Protein Size:	78846 Da
Gene Name:	B-cell CLL/lymphoma 6
Database Link:	NP_001124317 Entrez Gene 604 Human P41182
Synonyms:	BCL5; BCL6A; LAZ3; ZBTB27; ZNF51
Protein Families:	Druggable Genome, Transcription Factors



[View online »](#)

Product images:

BCL6 Antibody (C-term) (Cat. #TA324347) western blot analysis in NCI-H292 cell line lysates (35ug/lane). This demonstrates the BCL6 antibody detected the BCL6 protein (arrow).



Confocal immunofluorescent analysis of BCL6 Antibody (C-term) (ascites) (Cat#TA324347) with NCI-H460 cell followed by Alexa Fluor 488-conjugated goat anti-mouse IgG (green). Actin filaments have been labeled with Alexa Fluor 555 phalloidin (red).